

For Research Use Only

CoraLite® Plus 488-conjugated EPCAM/CD326 Monoclonal antibody

Catalog Number: CL488-66316

Featured Product

1 Publications



Basic Information

Catalog Number: CL488-66316	GenBank Accession Number: BC014785	Purification Method: Protein A purification
Size: 100ul , Concentration: 1000 ug/ml by Nanodrop;	GeneID (NCBI): 4072	CloneNo.: 2A2D5
Source: Mouse	UNIPROT ID: P16422	Recommended Dilutions: IF/ICC 1:50-1:500
Isotype: IgG2a	Full Name: epithelial cell adhesion molecule	Excitation/Emission maximum wavelengths: 493 nm / 522 nm
Immunogen Catalog Number: AG15393	Calculated MW: 314 aa, 35 kDa	
	Observed MW: 35-40 kDa	

Applications

Tested Applications: IF/ICC	Positive Controls: IF/ICC : HT-29 cells, MCF-7 cells
Cited Applications: WB	
Species Specificity: human	
Cited Species: human	

Background Information

Epithelial cell adhesion molecule (EpCAM, CD326) is a type I transmembrane glycoprotein that functions as a homophilic, epithelial-specific intercellular cell-adhesion molecule. In addition to cell adhesion, EpCAM is also involved in cellular signaling, cell migration, proliferation, and differentiation. EpCAM is highly expressed on most carcinomas and therefore of potential use as a diagnostic and prognostic marker for a variety of carcinomas, and has become a therapeutic target. (PMID: 20837599; 19249674; 21576002; 22647938)

Notable Publications

Author	Pubmed ID	Journal	Application
Xin Zhou	36243809	Cell Death Discov	WB

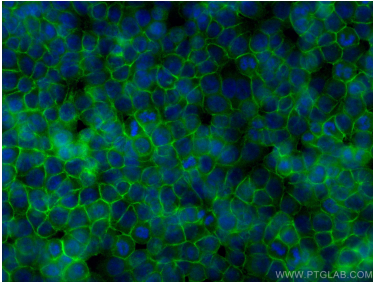
Storage

Storage:
Store at -20°C. Avoid exposure to light. Stable for one year after shipment.
Storage Buffer:
PBS with 50% glycerol, 0.05% Proclin300, 0.5% BSA, pH7.3
Aliquoting is unnecessary for -20°C storage

For technical support and original validation data for this product please contact:
T: 1 (888) 4PTGLAB (1-888-478-4522) (toll free in USA), or 1(312) 455-8498 (outside USA)
E: proteintech@ptglab.com
W: ptglab.com

This product is exclusively available under Proteintech Group brand and is not available to purchase from any other manufacturer.

Selected Validation Data



Immunofluorescent analysis of (-20°C Methanol) fixed HT-29 cells using CoraLite® Plus 488 EPCAM/CD326 antibody (CL488-66316, Clone: 2A2D5) at dilution of 1:200.