

For Research Use Only

CoraLite® Plus 488-conjugated RAB5A Monoclonal antibody

Catalog Number: CL488-66339



Basic Information

Catalog Number: CL488-66339	GenBank Accession Number: BC001267	Purification Method: Protein A purification
Size: 100ul , Concentration: 1000 ug/ml by Nanodrop;	GeneID (NCBI): 5868	CloneNo.: 1B6A5
Source: Mouse	UNIPROT ID: P20339	Recommended Dilutions: IF/ICC 1:50-1:500
Isotype: IgG2b	Full Name: RAB5A, member RAS oncogene family	Excitation/Emission maxima wavelengths: 493 nm / 522 nm
Immunogen Catalog Number: AG16781	Calculated MW: 215 aa, 24 kDa	
	Observed MW: 24 kDa	

Applications

Tested Applications: IF/ICC	Positive Controls: IF/ICC : HeLa cells,
Species Specificity: human, pig	

Background Information

Rab5a belongs to the Rab GTPases family proteins, which play roles in endocytosis, exocytosis, and vesicular transportation. Rab family proteins were recently reported to play important roles in human cancer progression. Rab5a was reported to be overexpressed in breast and ovarian cancers and associated with proliferation and invasion. This antibody is CL488 conjugated.

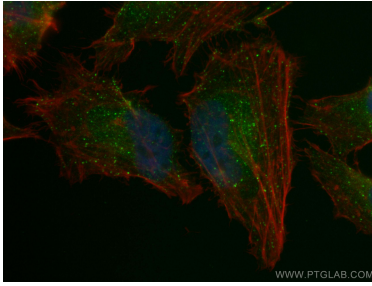
Storage

Storage:
Store at -20°C. Avoid exposure to light. Stable for one year after shipment.
Storage Buffer:
PBS with 50% Glycerol, 0.05% Proclin300, 0.5% BSA, pH 7.3.
Aliquoting is unnecessary for -20°C storage

For technical support and original validation data for this product please contact:
T: 1 (888) 4PTGLAB (1-888-478-4522) (toll free in USA), or 1(312) 455-8498 (outside USA)
E: proteintech@ptglab.com
W: ptglab.com

This product is exclusively available under Proteintech Group brand and is not available to purchase from any other manufacturer.

Selected Validation Data



Immunofluorescent analysis of (4% PFA) fixed HeLa cells using CoraLite® Plus 488 RAB5A antibody (CL488-66339, Clone: 1B6A5) at dilution of 1:200, CL594-Phalloidin (red).