

For Research Use Only

CoraLite® Plus 488-conjugated POMC Monoclonal antibody



Catalog Number: CL488-66358

1 Publications

Basic Information

Catalog Number: CL488-66358	GenBank Accession Number: BC065832	Purification Method: Protein G purification
Size: 100ul , Concentration: 1000 µg/ml by Nanodrop;	GeneID (NCBI): 5443	CloneNo.: 3C12C7
Source: Mouse	Full Name: proopiomelanocortin	Recommended Dilutions: IF 1:50-1:500
Isotype: IgG1	Calculated MW: 267 aa, 29 kDa	Excitation/Emission maximum wavelengths: 493 nm / 522 nm
Immunogen Catalog Number: AG17311		

Applications

Tested Applications: IF	Positive Controls: IF : HeLa cells,
Cited Applications: IF	
Species Specificity: human, rat, mouse	
Cited Species: human	

Background Information

Pro-opiomelanocortin (POMC) is a prohormone that encodes multiple smaller peptide hormones within its structure. POMC plays important roles in many pathological and physiological processes, including regulating energy metabolism, immune reactions, and sexual functions. POMC expression differs quantitatively and qualitatively among most normal tissues. The large molecule of POMC is the source of several important biologically active substances. POMC can be cleaved enzymatically into the following peptides: d NPP, γ -MSH, ACTH, α -MSH, CLIP, Lipotropin β , Lipotropin γ , β -MSH, β endorphin and Met-enkephalin.

Notable Publications

Author	Pubmed ID	Journal	Application
Heng Sun	38027207	Front Endocrinol (Lausanne)	IF

Storage

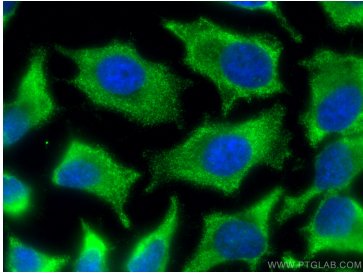
Storage:
Store at -20°C. Avoid exposure to light. Stable for one year after shipment.
Storage Buffer:
PBS with 50% Glycerol, 0.05% Proclin300, 0.5% BSA, pH 7.3.
Aliquoting is unnecessary for -20°C storage

*** 20ul sizes contain 0.1% BSA

For technical support and original validation data for this product please contact:
T: 1 (888) 4PTGLAB (1-888-478-4522) (toll free in USA), or 1(312) 455-8498 (outside USA)
E: proteintech@ptglab.com
W: ptglab.com

This product is exclusively available under Proteintech Group brand and is not available to purchase from any other manufacturer.

Selected Validation Data



Immunofluorescent analysis of (-20°C Ethanol) fixed HeLa cells using Coralite® Plus 488 POMC antibody (CL488-66358, Clone: 3C12C7) at dilution of 1:200.