

For Research Use Only

CoraLite® Plus 488 Mouse IgG1 Isotype Control (1F8D3)



Catalog Number: CL488-66360-1

Basic Information

Catalog Number:
CL488-66360-1

GenBank Accession Number:
GeneID (NCBI):

Purification Method:
Protein G purification

Size:
100ug, Concentration: 200 µg/ml by
Nanodrop;

Full Name:

CloneNo.:
1F8D3

Source:
Mouse

Excitation/Emission maxima
wavelengths:
493 nm / 522 nm

Isotype:
IgG1

Applications

Tested Applications:
FC

Species Specificity:
Megathura crenulata

Background Information

This antibody is used as the isotype control of mouse IgG1 (Kappa). It can be used as the isotype control in Flow Cytometry, Immuno-Precipitation and other experiments. The immunogen of this antibody is Keyhole Limpet Hemocyanin (KLH).

Storage

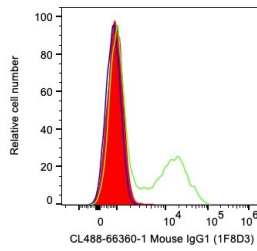
Storage:
Store at 2-8°C. Avoid exposure to light. Stable for one year after shipment.
Storage Buffer:
PBS with 0.09% sodium azide and 0.5% BSA.

*** 20ul sizes contain 0.1% BSA

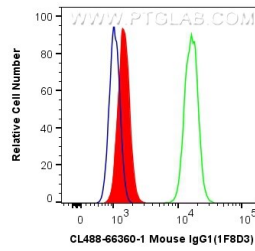
For technical support and original validation data for this product please contact:
T: 1 (888) 4PTGLAB (1-888-478-4522) (toll free in USA), or 1(312) 455-8498 (outside USA) E: proteintech@ptglab.com W: ptglab.com

This product is exclusively available under Proteintech Group brand and is not available to purchase from any other manufacturer.

Selected Validation Data



1X10⁶ human PBMCs were surface stained with 0.2 ug CoraLite® Plus 488 Anti-IgG1 Isotype Control (CL488-66360-1, Clone:1F8D3) (red), CL488 Anti-Human CD35 (green), or unstained (blue). Cells were not fixed. Lymphocytes were gated.



1X10⁶ A431 cells were intracellularly stained with 0.4 ug CoraLite® Plus 488 Anti-Mouse IgG1 isotype control (CL488-66360-1, Clone: 1F8D3) (red), or 0.4 ug CoraLite® Plus 488 Anti-Human FKBP8 (CL488-66690, Clone: 1C1G12) (green), or unstained (blue). Cells were fixed with 4% PFA and permeabilized with Flow Cytometry Perm Buffer (PF00011-C).