

For Research Use Only

CoraLite® Plus 488 Mouse IgG2a isotype control (11A1B2)

Catalog Number: CL488-66360-2



Basic Information

Catalog Number:

CL488-66360-2

GenBank Accession Number:

GeneID (NCBI):

Full Name:

Purification Method:

Protein A purification

CloneNo.:

11A1B2

Excitation/Emission maxima wavelengths:

493 nm / 522 nm

Size:

100ug , 200 µg/ml

Source:

Mouse

Isotype:

IgG2a

Applications

Tested Applications:

FC

Species Specificity:

megathura crenulata

Background Information

This antibody is used as the isotype control of mouse IgG2a. It can be used as the isotype control in Flow Cytometry and other experiments. The immunogen of this antibody is Keyhole Limpet Hemocyanin (KLH).

Storage

Storage:

Store at 2-8°C. Avoid exposure to light. Stable for one year after shipment.

Storage Buffer:

PBS with 0.1% sodium azide and 0.5% BSA.

For technical support and original validation data for this product please contact:

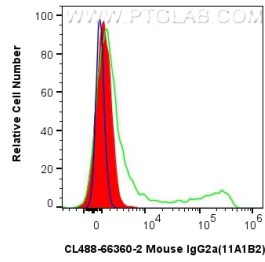
T: 1 (888) 4PTGLAB (1-888-478-4522) (toll free in USA), or 1(312) 455-8498 (outside USA)

E: proteintech@ptglab.com

W: ptglab.com

This product is exclusively available under Proteintech Group brand and is not available to purchase from any other manufacturer.

Selected Validation Data



1×10^6 human PBMCs were surface stained with 0.25 μ g CoraLite® Plus 488 Mouse IgG2a isotype control (11A1B2) (CL488-66360-2, Clone:11A1B2) (red), or 0.25 μ g CoraLite® Plus 488 Anti-Human CD8 (UCHT4) Mouse IgG2a Recombinant Antibody (CL488-65559, Clone: UCHT4) (green). Cells were not fixed, or unstained (blue). Lymphocytes were gated.