

For Research Use Only

CoraLite® Plus 488-conjugated ERp72 Monoclonal antibody

Catalog Number: CL488-66365



Basic Information

Catalog Number: CL488-66365	GenBank Accession Number: BC000425	Purification Method: Protein G purification
Size: 100ul , Concentration: 813 ug/ml by Nanodrop;	GeneID (NCBI): 9601	CloneNo.: 1D5F3
Source: Mouse	UNIPROT ID: P13667	Recommended Dilutions: IF/ICC 1:50-1:500
Isotype: IgG1	Full Name: protein disulfide isomerase family A, member 4	Excitation/Emission maxima wavelengths: 493 nm / 522 nm
Immunogen Catalog Number: AG6873	Calculated MW: 73 kDa	
	Observed MW: 72 kDa	

Applications

Tested Applications: IF/ICC	Positive Controls: IF/ICC : PC-3 cells,
Species Specificity: human	

Background Information

PDIA4 (Protein disulfide-isomerase A4) is also named ERP70, ERP72, and belongs to the protein disulfide isomerase family. It catalyzes the rearrangement of -S-S- bonds in proteins. ERp72 is a soluble protein localized in the ER lumen and contains the COOH-terminal retention signal, KEEL. There are 6 cysteine residues in the amino acid sequences of mouse and human ERp72. All of the cysteine residues occur in the internal thioredoxin motif, CGHC (PMID:15475357). The full-length protein has a signal peptide with 20 amino acids.

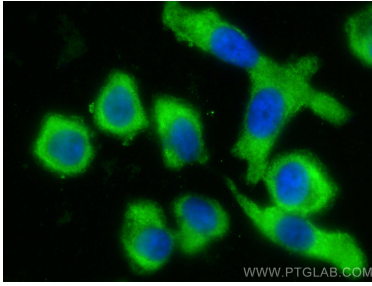
Storage

Storage:
Store at -20°C. Avoid exposure to light. Stable for one year after shipment.
Storage Buffer:
PBS with 50% Glycerol, 0.05% Proclin300, 0.5% BSA, pH 7.3.
Aliquoting is unnecessary for -20°C storage

For technical support and original validation data for this product please contact:
T: 1 (888) 4PTGLAB (1-888-478-4522) (toll free in USA), or 1(312) 455-8498 (outside USA)
E: proteintech@ptglab.com
W: ptglab.com

This product is exclusively available under Proteintech Group brand and is not available to purchase from any other manufacturer.

Selected Validation Data



Immunofluorescent analysis of (-20°C Ethanol) fixed PC-3 cells using CoraLite® Plus 488 ERp72 antibody (CL488-66365, Clone: 1D5F3) at dilution of 1:200.