

For Research Use Only

CoraLite® Plus 488-conjugated SKAP2 Monoclonal antibody

Catalog Number: CL488-66367



Basic Information

Catalog Number: CL488-66367	GenBank Accession Number: BC036044	Purification Method: Protein G purification
Size: 100ul , Concentration: 1000 ug/ml by Nanodrop;	GeneID (NCBI): 8935	CloneNo.: 2G3G9
Source: Mouse	UNIPROT ID: O75563	Recommended Dilutions: IF/ICC 1:50-1:500
Isotype: IgG1	Full Name: src kinase associated phosphoprotein 2	Excitation/Emission maxima wavelengths: 493 nm / 522 nm
Immunogen Catalog Number: AG3615	Calculated MW: 41 kDa	
	Observed MW: 55 kDa	

Applications

Tested Applications: IF/ICC, FC (Intra)	Positive Controls: IF/ICC : NIH/3T3 cells,
Species Specificity: human, mouse, rat, pig	

Background Information

SKAP2 (src kinase associated phosphoprotein 2), also named PRAP, contains PH domain and SH3 domain. It is localized in cytoplasm and was expressed in ubiquitously in various tissues including lung, skeletal muscle, and spleen, but not detectable in thymus and T cell lymphoma cells. SKAP2 may negatively regulate alpha-synuclein phosphorylation following cell stress. SKAP2 may be involved in B-cell and macrophage adhesion processes by coupling the B-cell receptor (BCR) to integrin activation.

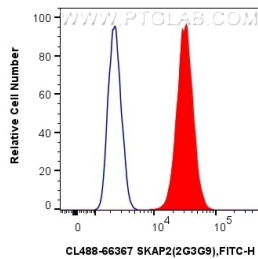
Storage

Storage:
Store at -20°C. Avoid exposure to light. Stable for one year after shipment.
Storage Buffer:
PBS with 50% Glycerol, 0.05% Proclin300, 0.5% BSA, pH 7.3.
Aliquoting is unnecessary for -20°C storage

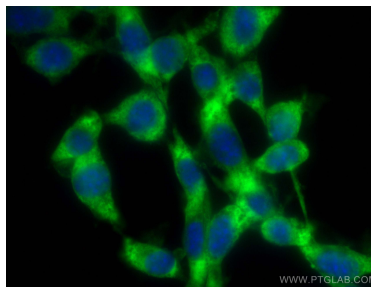
For technical support and original validation data for this product please contact:
T: 1 (888) 4PTGLAB (1-888-478-4522) (toll free in USA), or 1(312) 455-8498 (outside USA)
E: proteintech@ptglab.com
W: ptglab.com

This product is exclusively available under Proteintech Group brand and is not available to purchase from any other manufacturer.

Selected Validation Data



1X10⁶ NIH/3T3 cells were intracellularly stained with 0.4 µg CoraLite® Plus 488 Anti-Human SKAP2 (CL488-66367, Clone:2G3G9) (red), or 0.4 µg CoraLite® Plus 488 Mouse IgG1 Isotype Control (MOPC-21) (CL488-65124, Clone: MOPC-21) (blue). Cells were fixed with 4% PFA and permeabilized with Flow Cytometry Perm Buffer (PF00011-C).



Immunofluorescent analysis of (-20°C Ethanol) fixed NIH/3T3 cells using CoraLite® Plus 488 SKAP2 antibody (CL488-66367, Clone: 2G3G9) at dilution of 1:200.