

For Research Use Only

CoraLite® Plus 488-conjugated G6PD Monoclonal antibody



Catalog Number: **CL488-66373**

Featured Product

1 Publications

Basic Information

Catalog Number: CL488-66373	GenBank Accession Number: BC000337	Purification Method: Protein A purification
Size: 100ul , Concentration: 1000 µg/ml by Nanodrop;	GeneID (NCBI): 2539	CloneNo.: 2A7B12
Source: Mouse	Full Name: glucose-6-phosphate dehydrogenase	Recommended Dilutions: IF 1:50-1:500
Isotype: IgG2a	Calculated MW: 59 kDa	Excitation/Emission maxima wavelengths: 493 nm / 522 nm
Immunogen Catalog Number: AG21862		

Applications

Tested Applications: FC (Intra), IF	Positive Controls: IF : HeLa cells,
Species Specificity: human, mouse	

Background Information

G6PD(Glucose-6-phosphate 1-dehydrogenase) belongs to the glucose-6-phosphate dehydrogenase family. It is a housekeeping enzyme encoded in mammals by an X-linked gene. G6PD has important functions in intermediary metabolism because it catalyzes the first step in the pentose phosphate pathway and provides reductive potential in the form of NADPH.(PMID:7489710). This protein has 3 isoforms produced by alternative splicing.

Notable Publications

Author	Pubmed ID	Journal	Application
Michal Scur	36433992	Nat Commun	

Storage

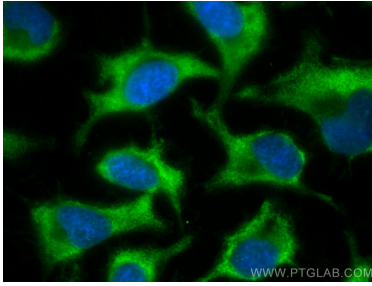
Storage:
Store at -20°C. Avoid exposure to light. Stable for one year after shipment.
Storage Buffer:
PBS with 50% Glycerol, 0.05% Proclin300, 0.5% BSA, pH 7.3.
Aliquoting is unnecessary for -20°C storage

*** 20ul sizes contain 0.1% BSA

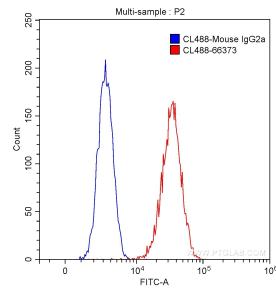
For technical support and original validation data for this product please contact:
T: 1 (888) 4PTGLAB (1-888-478-4522) (toll free in USA), or 1(312) 455-8498 (outside USA)
E: proteintech@ptglab.com
W: ptglab.com

This product is exclusively available under Proteintech Group brand and is not available to purchase from any other manufacturer.

Selected Validation Data



Immunofluorescent analysis of (-20°C Ethanol) fixed HeLa cells using CoraLite® Plus 488 G6PD antibody (CL488-66373, Clone: 2A7B12) at dilution of 1:200.



1X10⁶ HeLa cells were stained with 0.50 ug/test CoraLite® Plus 488-conjugated Anti-Human G6PD (CL488-66373, Clone:2A7B12) (red) or 0.50 ug control antibody (blue). Fixed with 90% MeOH.