

For Research Use Only

CoraLite® Plus 488-conjugated GSDMD Monoclonal antibody



Catalog Number: **CL488-66387**

Basic Information

Catalog Number: CL488-66387	GenBank Accession Number: BC008904	Purification Method: Protein A purification
Size: 100ul , Concentration: 1000 µg/ml by Nanodrop;	GeneID (NCBI): 79792	CloneNo.: 2E6C7
Source: Mouse	Full Name: gasdermin D	Recommended Dilutions: IF 1:50-1:500
Isotype: IgG2a	Calculated MW: 484 aa, 53 kDa	Excitation/Emission maxima wavelengths: 488 nm / 515 nm
Immunogen Catalog Number: AG16827	Observed MW: 47-53 kDa	

Applications

Tested Applications: IF	Positive Controls: IF : HeLa cells,
Species Specificity: human	

Background Information

GSDMD is a member of the gasdermin family. Members of this family appear to play a role in regulation of epithelial proliferation. GSDMD has been suggested to act as a tumor suppressor. Recently, GSDMD is identified as a new component of inflammasomes, and it is an executor of pyroptosis and required for interleukin-1 β secretion. Cleavage of GSDMD by inflammatory caspases determines pyroptotic cell death.

Storage

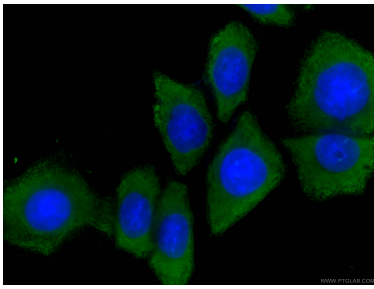
Storage:
Store at -20°C. Avoid exposure to light. Stable for one year after shipment.
Storage Buffer:
PBS with 50% Glycerol, 0.05% Proclin300, 0.5% BSA, pH 7.3.
Aliquoting is unnecessary for -20°C storage

*** 20ul sizes contain 0.1% BSA

For technical support and original validation data for this product please contact:
T: 1 (888) 4PTGLAB (1-888-478-4522) (toll free in USA), or 1(312) 455-8498 (outside USA)
E: proteintech@ptglab.com
W: ptglab.com

This product is exclusively available under Proteintech Group brand and is not available to purchase from any other manufacturer.

Selected Validation Data



Immunofluorescent analysis of (-20°C Ethanol) fixed HeLa cells using CL488-66387 (GSDMD antibody) at dilution of 1:100.