

For Research Use Only

CoraLite® Plus 488-conjugated CD36 Monoclonal antibody



Catalog Number: **CL488-66395**

Basic Information

Catalog Number: CL488-66395	GenBank Accession Number: BC008406	Purification Method: Protein G purification
Size: 100ul , Concentration: 1000 µg/ml by Nanodrop;	GeneID (NCBI): 948	CloneNo.: 1A8C5
Source: Mouse	Full Name: CD36 molecule (thrombospondin receptor)	Excitation/Emission maxima wavelengths: 493 nm / 522 nm
Isotype: IgG1	Calculated MW: 472 aa, 53 kDa	
Immunogen Catalog Number: AG13541	Observed MW: 88 kDa	

Applications

Tested Applications:

FC

Species Specificity:

human

Background Information

CD36, also named as GP3B and GP4, is an 88-kDa membrane glycoprotein present on platelets, monocytes, erythroid precursors, endothelial cells, and several tumor cell lines. CD36 binds to collagen, thrombospondin, anionic phospholipids, long chain fatty acids and may function in the transport and/or as a regulator of fatty acid transport and oxidized LDL. CD36 may function as a cell adhesion molecule. It mediates cytoadherence of Plasmodium falciparum parasitized erythrocytes. Mutation of CD36 will cause platelet glycoprotein IV deficiency which known as CD36 deficiency. Genetic variations in CD36 are associated with susceptibility to coronary heart disease type 7 (CHDS7).

Storage

Storage:

Store at -20°C. Avoid exposure to light. Stable for one year after shipment.

Storage Buffer:

PBS with 50% Glycerol, 0.05% Proclin300, 0.5% BSA, pH 7.3.

Aliquoting is unnecessary for -20°C storage

***** 20ul sizes contain 0.1%BSA**

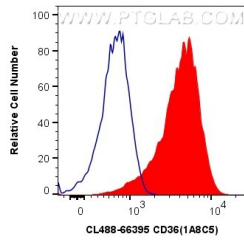
For technical support and original validation data for this product please contact:

T: 1 (888) 4PTGLAB (1-888-478-4522) (toll free
in USA), or 1(312) 455-8498 (outside USA)

E: proteintech@ptglab.com
W: ptglab.com

This product is exclusively available under Proteintech Group brand and is not available to purchase from any other manufacturer.

Selected Validation Data



1X10⁶ THP-1 cells were surface stained with 0.8 ug CoraLite® Plus 488 Anti-Human CD36 (CL488-66395, Clone:1A8C5) (red), or 0.8 ug CoraLite® Plus 488 Mouse IgG1 Isotype Control (MOPC-21) (CL488-65124, Clone: MOPC-21) (blue). Cells were not fixed.