

For Research Use Only

CoraLite® Plus 488-conjugated NF-M Monoclonal antibody

Catalog Number:CL488-66396



Basic Information

Catalog Number:

CL488-66396

Size:

100ul , Concentration: 1000 ug/ml by Nanodrop;

Source:

Mouse

Isotype:

IgG1

Immunogen Catalog Number:

AG22709

GenBank Accession Number:

BC002421

GeneID (NCBI):

4741

UNIPROT ID:

P07197

Full Name:

neurofilament, medium polypeptide

Calculated MW:

102 kDa

Observed MW:

140 kDa

Purification Method:

Protein G purification

CloneNo.:

2E3B12

Excitation/Emission maxima wavelengths:

493 nm / 522 nm

Applications

Tested Applications:

FC (Intra)

Species Specificity:

human, mouse, rat

Background Information

NEFM, also named as NEF3 and NFM, belongs to the intermediate filament family. Neurofilaments are the 10 nm intermediate filaments found specifically in neurons. They are a major component of the cell's cytoskeleton, and provide support for normal axonal radial growth. Neurofilaments usually contain three intermediate filament proteins: L, M, and H which are involved in the maintenance of neuronal caliber. The names given to the three major neurofilament subunits are based upon the apparent molecular weight of the mammalian subunits on SDS-PAGE: NF-L, 65-68 kDa; NF-M, 140-160 kDa and NF-H, 200-220 kDa.

Storage

Storage:

Store at -20°C. Avoid exposure to light. Stable for one year after shipment.

Storage Buffer:

PBS with 50% Glycerol, 0.05% Proclin300, 0.5% BSA, pH 7.3.

Aliquoting is unnecessary for -20°C storage

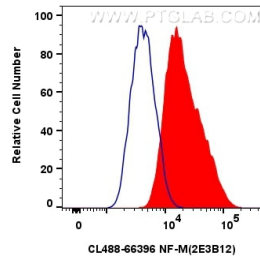
For technical support and original validation data for this product please contact:

T: 1 (888) 4PTGLAB (1-888-478-4522) (toll free in USA), or 1(312) 455-8498 (outside USA)

E: proteintech@ptglab.com
W: ptglab.com

This product is exclusively available under Proteintech Group brand and is not available to purchase from any other manufacturer.

Selected Validation Data



1×10^6 PC-12 cells were intracellularly stained with 0.8 μ g CoraLite® Plus 488 Anti-Human NF-M (CL488-66396, Clone: 2E3B12) (red), or 0.8 μ g CoraLite® Plus 488 Mouse IgG1 Isotype Control (1F8D3) (CL488-66360-1, Clone: 1F8D3) (blue). Cells were fixed with 4% PFA and permeabilized with Flow Cytometry Perm Buffer (PF00011-C).