

For Research Use Only

CoraLite® Plus 488-conjugated PLA2G1B Monoclonal antibody

Catalog Number:CL488-66397



Basic Information

Catalog Number:

CL488-66397

Size:

100ul , Concentration: 1000 ug/ml by
Nanodrop;

Source:

Mouse

Isotype:

IgG2a

Immunogen Catalog Number:

AG8812

GenBank Accession Number:

BC005386

GeneID (NCBI):

5319

UNIPROT ID:

P04054

Full Name:

phospholipase A2, group IB (pancreas)

Calculated MW:

70aa,8 kDa; 148aa,16 kDa

Observed MW:

16 kDa

Purification Method:

Protein A purification

CloneNo.:

1F2C10

Recommended Dilutions:

WB 1:500-1:1000

Excitation/Emission maxima

wavelengths:

493 nm / 522 nm

Applications

Tested Applications:

WB

Species Specificity:

human, pig

Positive Controls:

WB : pig pancreas tissue,

Storage

Storage:

Store at -20°C. Avoid exposure to light. Stable for one year after shipment.

Storage Buffer:

PBS with 50% Glycerol, 0.05% Proclin300, 0.5% BSA, pH 7.3.

Aliquoting is unnecessary for -20°C storage

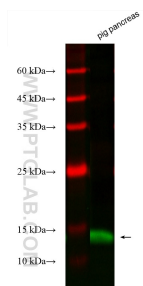
For technical support and original validation data for this product please contact:

T: 1 (888) 4PTGLAB (1-888-478-4522) (toll free
in USA), or 1(312) 455-8498 (outside USA)

E: proteintech@ptglab.com
W: ptglab.com

This product is exclusively available under Proteintech
Group brand and is not available to purchase from any
other manufacturer.

Selected Validation Data



Various lysates were subjected to SDS PAGE followed by western blot with CL488-66397 (PLA2G1B antibody) at dilution of 1:500 incubated at room temperature for 1.5 hours.