

For Research Use Only

CoraLite® Plus 488-conjugated Plasminogen Monoclonal antibody

Catalog Number:CL488-66399



Basic Information

Catalog Number:

CL488-66399

Size:

100ul , Concentration: 1000 ug/ml by Nanodrop;

Source:

Mouse

Isotype:

IgG1

Immunogen Catalog Number:

AG9938

GenBank Accession Number:

BC060513

GeneID (NCBI):

5340

UNIPROT ID:

P00747

Full Name:

plasminogen

Calculated MW:

810 aa, 91 kDa

Observed MW:

105 kDa

Purification Method:

Protein G purification

CloneNo.:

1F6A11

Recommended Dilutions:

IF-P 1:50-1:500

IF/ICC 1:50-1:500

Excitation/Emission maxima wavelengths:

493 nm / 522 nm

Applications

Tested Applications:

IF/ICC, IF-P

Species Specificity:

human

Positive Controls:

IF-P : human liver cancer tissue,

IF/ICC : HepG2 cells,

Background Information

Plasminogen is a secreted blood zymogen that is activated by proteolysis and converted to plasmin and angiotatin. Plasminogen plays an important role in fibrinolysis as well as wound healing, cell migration, tissue modeling and angiogenesis. Plasminogen is synthesized in the liver, and it circulates in the blood, with a half-life of 2.2 days. Plasminogen is the precursor of plasmin, which lyses fibrin clots to fibrin degradation products (FDP) and D-dimer; the conversion to active protease is mediated by tissue-type (tPA) and urokinase-type (uPA) plasminogen activators. Defects in plasminogen are likely a cause of thrombophilia and ligneous conjunctivitis.

Storage

Storage:

Store at -20°C. Avoid exposure to light. Stable for one year after shipment.

Storage Buffer:

PBS with 50% Glycerol, 0.05% Proclin300, 0.5% BSA, pH 7.3.

Aliquoting is unnecessary for -20°C storage

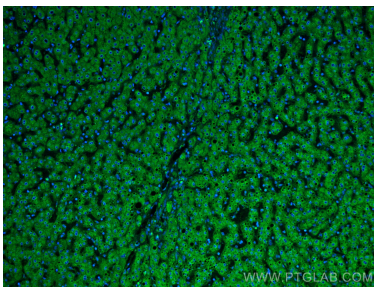
For technical support and original validation data for this product please contact:

T: 1 (888) 4PTGLAB (1-888-478-4522) (toll free in USA), or 1(312) 455-8498 (outside USA)

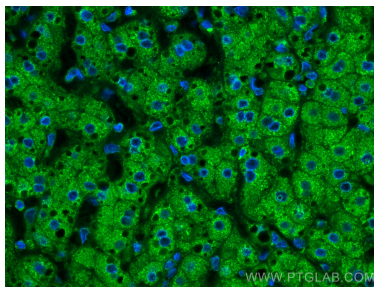
E: proteintech@ptglab.com
W: ptglab.com

This product is exclusively available under Proteintech Group brand and is not available to purchase from any other manufacturer.

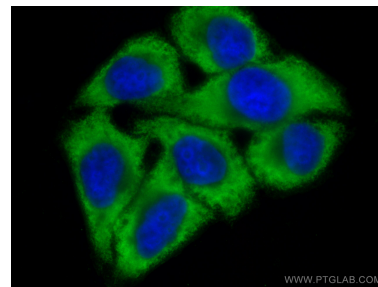
Selected Validation Data



Immunofluorescent analysis of (4% PFA) fixed human liver cancer tissue using CoraLite® Plus 488 Plasminogen antibody (CL488-66399, Clone: 1F6A11) at dilution of 1:200.



Immunofluorescent analysis of (4% PFA) fixed human liver cancer tissue using CoraLite® Plus 488 Plasminogen antibody (CL488-66399, Clone: 1F6A11) at dilution of 1:200.



Immunofluorescent analysis of (-20°C Ethanol) fixed HepG2 cells using CoraLite® Plus 488 Plasminogen antibody (CL488-66399, Clone: 1F6A11) at dilution of 1:200.