

For Research Use Only

CoraLite® Plus 488-conjugated PSMB10 Monoclonal antibody

Catalog Number:CL488-66403



Basic Information

Catalog Number: CL488-66403	GenBank Accession Number: BC017198	Purification Method: Protein A purification
Size: 100ul , Concentration: 1000 ug/ml by Nanodrop;	GeneID (NCBI): 5699	CloneNo.: 1G8C1
Source: Mouse	UNIPROT ID: P40306	Recommended Dilutions: IF/ICC: 1:50-1:500
Isotype: IgG2a	Full Name: proteasome (prosome, macropain) subunit, beta type, 10	Excitation/Emission maxima wavelengths: 493 nm / 522 nm
Immunogen Catalog Number: AG8835	Calculated MW: 273 aa, 29 kDa	
	Observed MW: 28 kDa	

Applications

Tested Applications: IF/ICC	Positive Controls: IF/ICC : Raji cells,
Species Specificity: human, mouse, rat, pig	

Background Information

SMB10(Proteasome subunit beta type-10) is also named as LMP10, MECL1.It belongs to the peptidase T1B family and is a multicatalytic proteinase complex which is characterized by its ability to cleave peptides with Arg, Phe, Tyr, Leu, and Glu adjacent to the leaving group at neutral or slightly basic pH.

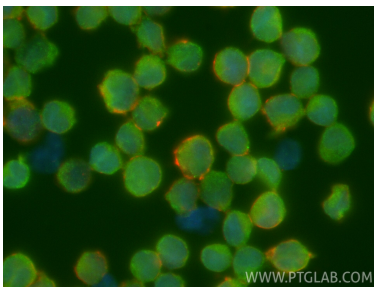
Storage

Storage:
Store at -20°C. Avoid exposure to light. Stable for one year after shipment.
Storage Buffer:
PBS with 50% glycerol, 0.05% Proclin300, 0.5% BSA, pH7.3
Aliquoting is unnecessary for -20°C storage

For technical support and original validation data for this product please contact:
T: 1 (888) 4PTGLAB (1-888-478-4522) (toll free in USA), or 1(312) 455-8498 (outside USA) E: proteintech@ptglab.com
W: ptglab.com

This product is exclusively available under Proteintech Group brand and is not available to purchase from any other manufacturer.

Selected Validation Data



Immunofluorescent analysis of (4% PFA) fixed Raji cells using CoraLite® Plus 488 PSMB10 antibody (CL488-66403, Clone: 1G8C1) at dilution of 1:200, CL594-phalloidin (red).