

For Research Use Only

CoraLite® Plus 488-conjugated Calsequestrin 2 Monoclonal antibody

Catalog Number: CL488-66419



Basic Information

Catalog Number: CL488-66419	GenBank Accession Number: BC022288	Purification Method: Protein A purification
Size: 100ul , Concentration: 1000 ug/ml by Nanodrop;	GeneID (NCBI): 845	CloneNo.: 1C10A1
Source: Mouse	UNIPROT ID: O14958	Recommended Dilutions: IF-P 1:50-1:500
Isotype: IgG2a	Full Name: calsequestrin 2 (cardiac muscle)	Excitation/Emission maxima wavelengths: 493 nm / 522 nm
Immunogen Catalog Number: AG13246	Calculated MW: 46 kDa	
	Observed MW: 50 kDa	

Applications

Tested Applications: IF-P	Positive Controls: IF-P : mouse heart tissue,
Species Specificity: human, rat, pig, mouse	

Background Information

Calsequestrin (CASQ) is a Ca²⁺-binding protein present primarily in junctional sarcoplasmic reticulum of skeletal and cardiac muscle; the cardiac form (CASQ2) is encoded by a separate gene. The primary role of CASQ2 is buffering of the sarcoplasmic reticulum Ca²⁺ ions, but another role for CASQ2 has emerged recently: CASQ2 regulates the open probability of ryanodine receptor 2 (RyR2). Mutations in CASQ2 cause stress-induced polymorphic ventricular tachycardia, also referred to as catecholaminergic polymorphic ventricular tachycardia 2 (CPVT2), a disease characterized by bidirectional ventricular tachycardia that may lead to cardiac arrest.

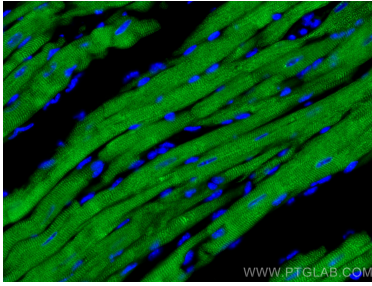
Storage

Storage:
Store at -20°C. Avoid exposure to light. Stable for one year after shipment.
Storage Buffer:
PBS with 50% Glycerol, 0.05% Proclin300, 0.5% BSA, pH 7.3.
Aliquoting is unnecessary for -20°C storage

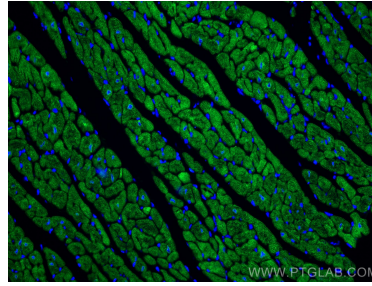
For technical support and original validation data for this product please contact:
T: 1 (888) 4PTGLAB (1-888-478-4522) (toll free in USA), or 1(312) 455-8498 (outside USA)
E: proteintech@ptglab.com
W: ptglab.com

This product is exclusively available under Proteintech Group brand and is not available to purchase from any other manufacturer.

Selected Validation Data



Immunofluorescent analysis of (4% PFA) fixed mouse heart tissue using CoraLite® Plus 488 Calsequestrin 2 antibody (CL488-66419, Clone: 1C10A1) at dilution of 1:200.



Immunofluorescent analysis of (4% PFA) fixed mouse heart tissue using CoraLite® Plus 488 Calsequestrin 2 antibody (CL488-66419, Clone: 1C10A1) at dilution of 1:200.