

For Research Use Only

# CoraLite® Plus 488-conjugated CDC37 Monoclonal antibody

Catalog Number: CL488-66420



## Basic Information

<b>Catalog Number:</b> CL488-66420	<b>GenBank Accession Number:</b> BC000083	<b>Purification Method:</b> Protein A purification
<b>Size:</b> 100ul , Concentration: 1000 ug/ml by Nanodrop;	<b>GeneID (NCBI):</b> 11140	<b>CloneNo.:</b> 1C2A6
<b>Source:</b> Mouse	<b>UNIPROT ID:</b> Q16543	<b>Recommended Dilutions:</b> WB 1:500-1:1000
<b>Isotype:</b> IgG2a	<b>Full Name:</b> cell division cycle 37 homolog (S. cerevisiae)	<b>Excitation/Emission maxima wavelengths:</b> 493 nm / 522 nm
<b>Immunogen Catalog Number:</b> AG0267	<b>Calculated MW:</b> 44 kDa	
	<b>Observed MW:</b> 44 kDa	

## Applications

<b>Tested Applications:</b> WB	<b>Positive Controls:</b> WB : HEK-293 cells, Jurkat cells, MCF-7 cells
<b>Species Specificity:</b> human, mouse, rat	

## Background Information

CDC (cell division control) family of proteins are regulatory proteins involved in the processes of cell cycle and proliferation. CDC37, migrated as a protein of 50 kDa in SDS PAGE, is a co-chaperone protein that recruits several immature client kinases to Hsp90 for proper folding. It functions in association with Hsp90, although little is known of its mechanism of action or where it fits into a folding pathway involving other Hsp90 cochaperones. CDC37 up-regulation is a common early event in some localized human cancers. But, the effect of CDC37 dysregulation in human cells is unclear.

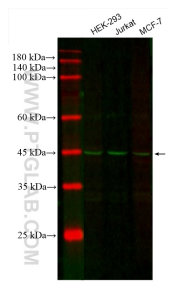
## Storage

**Storage:**  
Store at -20°C. Avoid exposure to light. Stable for one year after shipment.  
**Storage Buffer:**  
PBS with 50% Glycerol, 0.05% Proclin300, 0.5% BSA, pH 7.3.  
Aliquoting is unnecessary for -20°C storage

For technical support and original validation data for this product please contact:  
T: 1 (888) 4PTGLAB (1-888-478-4522) (toll free in USA), or 1(312) 455-8498 (outside USA)  
E: [proteintech@ptglab.com](mailto:proteintech@ptglab.com)  
W: [ptglab.com](http://ptglab.com)

This product is exclusively available under Proteintech Group brand and is not available to purchase from any other manufacturer.

## Selected Validation Data



Various lysates were subjected to SDS PAGE followed by western blot with CL488-66420 (CDC37 antibody) at dilution of 1:500 incubated at room temperature for 1.5 hours.