

For Research Use Only

# CoraLite® Plus 488-conjugated GDI1 Monoclonal antibody

Catalog Number:CL488-66434



## Basic Information

Catalog Number:

CL488-66434

Size:

100ul , Concentration: 1000 ug/ml by Nanodrop;

Source:

Mouse

Isotype:

IgG1

Immunogen Catalog Number:

AG17511

GenBank Accession Number:

BC000317

GeneID (NCBI):

2664

UNIPROT ID:

P31150

Full Name:

GDP dissociation inhibitor 1

Calculated MW:

51 kDa

Observed MW:

55 kDa

Purification Method:

Protein G purification

CloneNo.:

4E1G1

Recommended Dilutions:

IF/ICC 1:50-1:500

Excitation/Emission maxima wavelengths:

493 nm / 522 nm

## Applications

Tested Applications:

IF/ICC

Species Specificity:

human, mouse, rat, pig

Positive Controls:

IF/ICC : MCF-7 cells,

## Background Information

GDP dissociation inhibitors (GDIs) are proteins that regulate the GDP-GTP exchange reaction of members of the rab family. GDIs can bind and release GDP-bound Rab proteins from membranes. Two GDI proteins towards different Rab proteins have been identified. GDI1 interacts with almost all of the Rab proteins, while GDI2 interacts with Rab11 but not Rab3A. GDI1 is expressed primarily in neural and sensory tissues and also in secretory cells, displaying a diffuse, cytoplasmic distribution in cells. It runs as a 55 kDa protein in SDS-PAGE. (PMID: 7929030, PMID: 19570034)

## Storage

Storage:

Store at -20°C. Avoid exposure to light. Stable for one year after shipment.

Storage Buffer:

PBS with 50% Glycerol, 0.05% Proclin300, 0.5% BSA, pH 7.3.

Aliquoting is unnecessary for -20°C storage

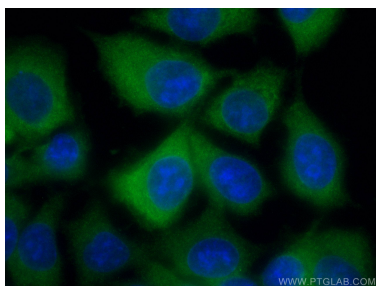
For technical support and original validation data for this product please contact:

T: 1 (888) 4PTGLAB (1-888-478-4522) (toll free in USA), or 1(312) 455-8498 (outside USA)

E: [proteintech@ptglab.com](mailto:proteintech@ptglab.com)  
W: [ptglab.com](http://ptglab.com)

This product is exclusively available under Proteintech Group brand and is not available to purchase from any other manufacturer.

## Selected Validation Data



Immunofluorescent analysis of (-20°C Ethanol) fixed MCF-7 cells using CoraLite® Plus 488 GDI1 antibody (CL488-66434, Clone: 4E1G1) at dilution of 1:200.