

For Research Use Only



# CoraLite® Plus 488-conjugated Syntaxin 1A / Syntaxin 1B Monoclonal antibody

Catalog Number: **CL488-66437**

Featured Product

## Basic Information

Catalog Number:

CL488-66437

Size:

100ul , Concentration: 1000 ug/ml by Nanodrop;

Source:

Mouse

Isotype:

IgG1

Immunogen Catalog Number:

AG10257

GenBank Accession Number:

BC062298

GeneID (NCBI):

112755

UNIPROT ID:

P61266

Full Name:

syntaxin 1B

Calculated MW:

288 aa, 33 kDa

Observed MW:

33 kDa

Purification Method:

Protein G purification

CloneNo.:

2D3B5

Recommended Dilutions:

IF-P 1:50-1:500

Excitation/Emission maxima wavelengths:

493 nm / 522 nm

## Applications

Tested Applications:

IF-P

Species Specificity:

human, mouse, rat

Positive Controls:

IF-P : mouse brain tissue,

## Background Information

Syntaxins are a family of transmembrane proteins that belong to the SNARE complex (PMID: 11737951). In conjunction with other SNAREs and with the cytoplasmic NSF and SNAP proteins, syntaxins mediate vesicle fusion in diverse vesicular transport processes along the exocytic and the endocytic pathway (PMID: 11737951). Syntaxin 1A and 1B, two closely related isoforms of syntaxin 1, are involved in synaptic vesicle docking and fusion during neurotransmitter release (PMID: 7690687; 1321498; 18691641).

## Storage

Storage:

Store at -20°C. Avoid exposure to light. Stable for one year after shipment.

Storage Buffer:

PBS with 50% Glycerol, 0.05% Proclin300, 0.5% BSA, pH 7.3.

Aliquoting is unnecessary for -20°C storage

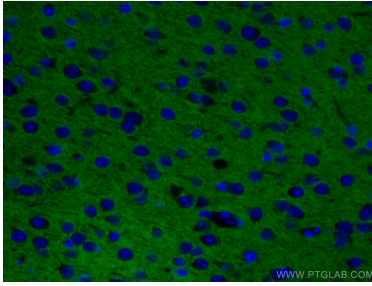
For technical support and original validation data for this product please contact:

T: 1 (888) 4PTGLAB (1-888-478-4522) (toll free in USA), or 1(312) 455-8498 (outside USA)

E: [proteintech@ptglab.com](mailto:proteintech@ptglab.com)  
W: [ptglab.com](http://ptglab.com)

This product is exclusively available under Proteintech Group brand and is not available to purchase from any other manufacturer.

## Selected Validation Data



Immunofluorescent analysis of (4% PFA) fixed mouse brain tissue using CoraLite® Plus 488 Syntaxin 1A / Syntaxin 1B antibody (CL488-66437, Clone: 2D3B5 ) at dilution of 1:200.