

For Research Use Only

CoraLite® Plus 488-conjugated PEBP1 Monoclonal antibody

Catalog Number: CL488-66438



Basic Information

Catalog Number: CL488-66438	GenBank Accession Number: BC008714	Purification Method: Protein G purification
Size: 100ul , Concentration: 1000 ug/ml by Nanodrop;	GeneID (NCBI): 5037	CloneNo.: 2D4D11
Source: Mouse	UNIPROT ID: P30086	Recommended Dilutions: IF/ICC 1:50-1:500
Isotype: IgG1	Full Name: phosphatidylethanolamine binding protein 1	Excitation/Emission maxima wavelengths: 493 nm / 522 nm
Immunogen Catalog Number: AG0864	Calculated MW: 21 kDa	
	Observed MW: 23-27 kDa	

Applications

Tested Applications: IF/ICC, FC (Intra)	Positive Controls: IF/ICC : A549 cells,
Species Specificity: human, mouse, rat	

Background Information

Raf kinase inhibitor protein (RKIP), also termed phosphatidylethanolamine binding protein PEBP1, was initially identified as a potent inhibitor of Raf-1/MEK/ERK, NF- κ B, and G-protein-coupled receptor signaling pathways. Later RKIP has been further identified as a metastasis suppressor and its loss of expression has been reported in various cancers. Its expression has been proposed as a prognostic marker for patients diagnosed with the above cancers.

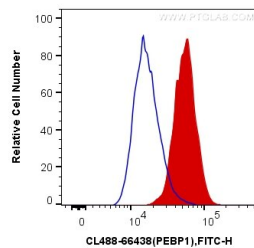
Storage

Storage:
Store at -20°C. Avoid exposure to light. Stable for one year after shipment.
Storage Buffer:
PBS with 50% Glycerol, 0.05% Proclin300, 0.5% BSA, pH 7.3.
Aliquoting is unnecessary for -20°C storage

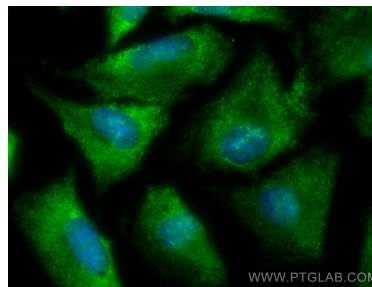
For technical support and original validation data for this product please contact:
T: 1 (888) 4PTGLAB (1-888-478-4522) (toll free in USA), or 1(312) 455-8498 (outside USA)
E: proteintech@ptglab.com
W: ptglab.com

This product is exclusively available under Proteintech Group brand and is not available to purchase from any other manufacturer.

Selected Validation Data



1×10^6 PC-12 cells were intracellularly stained with 0.4 μ g CoraLite® Plus 488 Anti-Human PEBP1 (CL488-66438, Clone:2D4D11) (red), or 0.4 μ g Mouse IgG1 Isotype Control (CL488-66360, Clone: T1F8D3F10) (blue). Cells were fixed with 4% PFA and permeabilized with Flow Cytometry Perm Buffer (PF00011-C).



Immunofluorescent analysis of (-20°C Ethanol) fixed A549 cells using CoraLite® Plus 488 PEBP1 antibody (CL488-66438, Clone: 2D4D11) at dilution of 1:200.