

For Research Use Only

# CoraLite® Plus 488-conjugated RGS4 Monoclonal antibody

Catalog Number:CL488-66441



## Basic Information

Catalog Number:

CL488-66441

Size:

100ul , Concentration: 1000 ug/ml by Nanodrop;

Source:

Mouse

Isotype:

IgG1

Immunogen Catalog Number:

AG6029

GenBank Accession Number:

BC051869

GeneID (NCBI):

5999

UNIPROT ID:

P49798

Full Name:

regulator of G-protein signaling 4

Calculated MW:

23 kDa

Observed MW:

34 kDa

Purification Method:

Protein G purification

CloneNo.:

1E2E2

Recommended Dilutions:

WB 1:500-1:2000

Excitation/Emission maxima wavelengths:

493 nm / 522 nm

## Applications

Tested Applications:

WB

Species Specificity:

human, rat, mouse, pig

Positive Controls:

WB : C6 cells, Neuro-2a cells, Raji cells, SH-SY5Y cells

## Background Information

Regulator of G protein signaling (RGS) proteins are a large family of highly diverse, multifunctional signaling proteins. RGS4 is one of seven members of a classic R4 RGS protein that accelerates the GTPase activity of the Gai/o and Gq/11 family members. RGS4 is highly expressed in multiple brain regions including the cerebral cortex, amygdala, hippocampus, and striatum. Extensive studies have demonstrated that RGS4 plays an important role in regulating smooth muscle contraction, cardiomyocyte development, neural plasticity and psychiatric disorders.

## Storage

Storage:

Store at -20°C. Avoid exposure to light. Stable for one year after shipment.

Storage Buffer:

PBS with 50% Glycerol, 0.05% Proclin300, 0.5% BSA, pH 7.3.

Aliquoting is unnecessary for -20°C storage

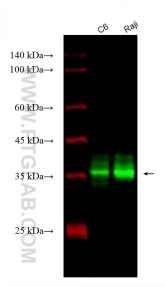
For technical support and original validation data for this product please contact:

T: 1 (888) 4PTGLAB (1-888-478-4522) (toll free in USA), or 1(312) 455-8498 (outside USA)

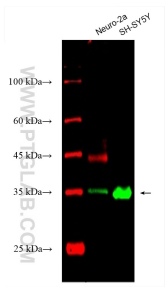
E: [proteintech@ptglab.com](mailto:proteintech@ptglab.com)  
W: [ptglab.com](http://ptglab.com)

This product is exclusively available under Proteintech Group brand and is not available to purchase from any other manufacturer.

# Selected Validation Data



Various lysates were subjected to SDS PAGE followed by western blot with CL488-66441 (RGS4 antibody) at dilution of 1:1000 incubated at room temperature for 1.5 hours.



Various lysates were subjected to SDS PAGE followed by western blot with CL488-66441 (RGS4 antibody) at dilution of 1:2000 incubated at room temperature for 1.5 hours.