

For Research Use Only

# CoraLite® Plus 488-conjugated Gamma Catenin Monoclonal antibody

Catalog Number: CL488-66445



## Basic Information

<b>Catalog Number:</b> CL488-66445	<b>GenBank Accession Number:</b> BC011865	<b>Purification Method:</b> Protein G purification
<b>Size:</b> 100ul , Concentration: 1000 ug/ml by Nanodrop;	<b>GeneID (NCBI):</b> 3728	<b>CloneNo.:</b> 1A5D10
<b>Source:</b> Mouse	<b>UNIPROT ID:</b> P14923	<b>Recommended Dilutions:</b> WB 1:500-1:1000
<b>Isotype:</b> IgG1	<b>Full Name:</b> junction plakoglobin	<b>Excitation/Emission maxima wavelengths:</b> 493 nm / 522 nm
<b>Immunogen Catalog Number:</b> AG1627	<b>Calculated MW:</b> 82 kDa	
	<b>Observed MW:</b> 82 kDa	

## Applications

<b>Tested Applications:</b> WB	<b>Positive Controls:</b> WB : HT-29 cells, T-47D cells
<b>Species Specificity:</b> human, rat, pig, Canine	

## Background Information

Plakoglobin ( $\gamma$ -catenin), a member of the Armadillo proteins, plays important roles in cell adhesion with  $\alpha$ -catenin and  $\beta$ -catenin, is involved in Wnt signaling, and is translocated into the nucleus and binds LEF1. Plakoglobin is a major cytoplasmic component of both desmosomes and adherens junctions, and is the only known constituent common to submembranous plaques in both of these structures, which are located at the intercalated disc (ICD) of cardiomyocytes. Plakoglobin links cadherins to the actin cytoskeleton. Mutations in plakoglobin are associated with arrhythmogenic right ventricular dysplasia and Pemphigus vulgaris.

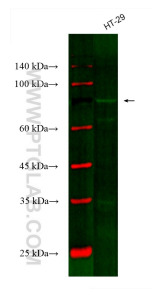
## Storage

**Storage:**  
Store at -20°C. Avoid exposure to light. Stable for one year after shipment.  
**Storage Buffer:**  
PBS with 50% Glycerol, 0.05% Proclin300, 0.5% BSA, pH 7.3.  
**Aliquoting is unnecessary for -20°C storage**

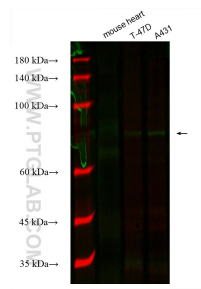
For technical support and original validation data for this product please contact:  
T: 1 (888) 4PTGLAB (1-888-478-4522) (toll free in USA), or 1(312) 455-8498 (outside USA)  
E: [proteintech@ptglab.com](mailto:proteintech@ptglab.com)  
W: [ptglab.com](http://ptglab.com)

This product is exclusively available under Proteintech Group brand and is not available to purchase from any other manufacturer.

# Selected Validation Data



Various lysates were subjected to SDS PAGE followed by western blot with CL488-66445 (Gamma Catenin antibody) at dilution of 1:500 incubated at room temperature for 1.5 hours.



Various lysates were subjected to SDS PAGE followed by western blot with CL488-66445 (Gamma Catenin antibody) at dilution of 1:500 incubated at room temperature for 1.5 hours.