

For Research Use Only

CoraLite® Plus 488-conjugated CBX3 Monoclonal antibody

Catalog Number: CL488-66446



Basic Information

Catalog Number: CL488-66446	GenBank Accession Number: BC000954	Purification Method: Protein A purification
Size: 100ul , Concentration: 1000 ug/ml by Nanodrop;	GeneID (NCBI): 11335	CloneNo.: 1A5A3
Source: Mouse	UNIPROT ID: Q13185	Recommended Dilutions: IF/ICC 1:250-1:1000
Isotype: IgG2a	Full Name: chromobox homolog 3 (HP1 gamma homolog, Drosophila)	Excitation/Emission maxima wavelengths: 493 nm / 522 nm
Immunogen Catalog Number: AG19112	Calculated MW: 21 kDa	
	Observed MW: 22 kDa	

Applications

Tested Applications: IF/ICC, FC (Intra)	Positive Controls: IF/ICC : HepG2 cells,
Species Specificity: human, mouse	

Background Information

The family of Heterochromatin protein 1 (HP1) proteins is a family of highly conserved heterochromatin-associated non-histone chromosomal proteins, which has important functions in nucleus. These functions include gene activation or repression, regulation of binding of cohesion complexes to centromere, sequestration of genes to nuclear periphery, and heterochromatin formation and propagation. Much evidence shows that HP1 proteins interact with numerous proteins including methylated histones, histone methyltransferases and so on. CBX3 is one of the paralogues of HP1 proteins

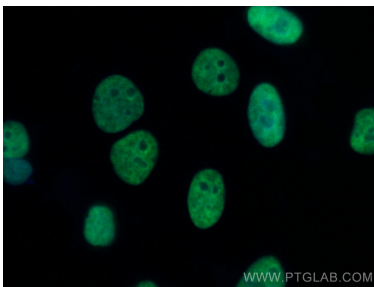
Storage

Storage:
Store at -20°C. Avoid exposure to light. Stable for one year after shipment.
Storage Buffer:
PBS with 50% Glycerol, 0.05% Proclin300, 0.5% BSA, pH 7.3.
Aliquoting is unnecessary for -20°C storage

For technical support and original validation data for this product please contact:
T: 1 (888) 4PTGLAB (1-888-478-4522) (toll free in USA), or 1(312) 455-8498 (outside USA)
E: proteintech@ptglab.com
W: ptglab.com

This product is exclusively available under Proteintech Group brand and is not available to purchase from any other manufacturer.

Selected Validation Data



Immunofluorescent analysis of (4% PFA) fixed HepG2 cells using CoraLite® Plus 488 CBX3 antibody (CL488-66446, Clone: 1A5A3) at dilution of 1:500.

1X10⁶ HeLa cells were intracellularly stained with 0.4 ug CoraLite® Plus 488 Anti-Human CBX3 (CL488-66446, Clone:1A5A3) (red), or 0.4 ug Mouse IgG2a Isotype Control (CL488-66360-2, Clone: K11A1B2A2) (blue). Cells were fixed and permeabilized with Transcription Factor Staining Buffer Kit (PF00011).