

For Research Use Only

CoraLite® Plus 488-conjugated Heavy chain of Rabbit IgG Monoclonal antibody



Catalog Number: CL488-66467

4 Publications

Basic Information

Catalog Number: CL488-66467	GenBank Accession Number: GeneID (NCBI): UNIPROT ID: N/A	Purification Method: Protein G purification
Size: 100ul , Concentration: 2000 ug/ml by Nanodrop;	Full Name:	CloneNo.: 1C9A5
Source: Mouse		Recommended Dilutions: IF/ICC 1:200-1:800
Isotype: IgG1		Excitation/Emission maxima wavelengths: 493 nm / 522 nm

Applications

Tested Applications: IF/ICC	Positive Controls: IF/ICC : HeLa cells,
Cited Applications: IF	
Species Specificity: rabbit	

Background Information

This antibody specifically recognizes the heavy chain of Rabbit IgG.

Notable Publications

Author	Pubmed ID	Journal	Application
Yinghua Zhao	34471099	Signal Transduct Target Ther	IF
Yanni Gao	36366433	Viruses	IF
Zixin Chen	31584200	J Cell Physiol	IF

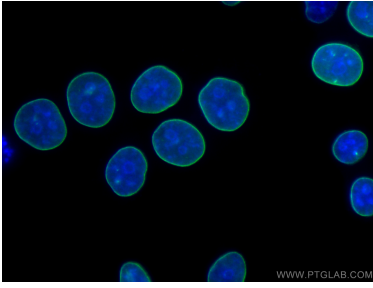
Storage

Storage:
Store at -20°C. Avoid exposure to light. Stable for one year after shipment.
Storage Buffer:
PBS with 50% Glycerol, 0.05% Proclin300, 0.5% BSA, pH 7.3.
Aliquoting is unnecessary for -20°C storage

For technical support and original validation data for this product please contact:
T: 1 (888) 4PTGLAB (1-888-478-4522) (toll free in USA), or 1(312) 455-8498 (outside USA)
E: proteintech@ptglab.com
W: ptglab.com

This product is exclusively available under Proteintech Group brand and is not available to purchase from any other manufacturer.

Selected Validation Data



Immunofluorescent analysis of (-20°C Ethanol) fixed HeLa cells using the CoraLite® Plus 488-conjugated version of this antibody, CL488-66467 (Heavy chain of Rabbit IgG antibody), at dilution of 1:400.