

For Research Use Only

CoraLite® Plus 488-conjugated CRABP2 Monoclonal antibody

Catalog Number: CL488-66468

Featured Product



Basic Information

Catalog Number:

CL488-66468

Size:

100ul , Concentration: 1000 ug/ml by Nanodrop;

Source:

Mouse

Isotype:

IgG1

Immunogen Catalog Number:

AG0309

GenBank Accession Number:

BC001109

GeneID (NCBI):

1382

UNIPROT ID:

P29373

Full Name:

cellular retinoic acid binding protein 2

Calculated MW:

16 kDa

Observed MW:

14 kDa

Purification Method:

Protein G purification

CloneNo.:

1A5F3

Recommended Dilutions:

IF/ICC 1:50-1:500

Excitation/Emission maxima

wavelengths:

493 nm / 522 nm

Applications

Tested Applications:

IF/ICC, FC (Intra)

Species Specificity:

human, mouse, rat, pig

Positive Controls:

IF/ICC : MCF-7 cells,

Background Information

Cellular retinoic acid binding protein 2 (CRABP2, synonyms: RBP6, CRABP-II). A number of specific carrier proteins for members of the vitamin A family have been discovered. Cellular retinoic acid binding proteins (CRABP) are low molecular weight proteins whose precise function remains unknown. CRABP2 is important in retinoic acid-mediated regulation of human skin growth and differentiation. It has been postulated that the CRABP2 gene is transcriptionally regulated by a newly synthesized regulatory protein.

Storage

Storage:

Store at -20°C. Avoid exposure to light. Stable for one year after shipment.

Storage Buffer:

PBS with 50% Glycerol, 0.05% Proclin300, 0.5% BSA, pH 7.3.

Aliquoting is unnecessary for -20°C storage

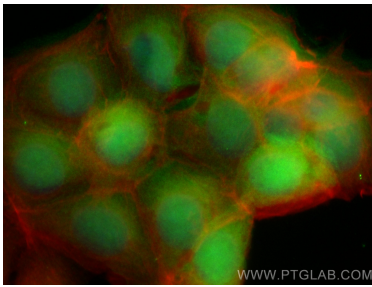
For technical support and original validation data for this product please contact:

T: 1 (888) 4PTGLAB (1-888-478-4522) (toll free in USA), or 1(312) 455-8498 (outside USA)

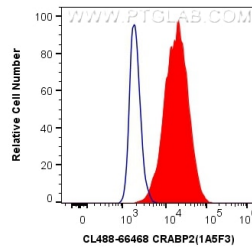
E: proteintech@ptglab.com
W: ptglab.com

This product is exclusively available under Proteintech Group brand and is not available to purchase from any other manufacturer.

Selected Validation Data



Immunofluorescent analysis of (4% PFA) fixed MCF-7 cells using CoraLite® Plus 488 CRABP2 antibody (CL488-66468, Clone: 1A5F3) at dilution of 1:200, CL594-Phalloidin (red).



1X10⁶ MCF-7 cells were intracellularly stained with 0.8 ug CoraLite® Plus 488 Anti-Human CRABP2 (CL488-66468, Clone:1A5F3) (red), or 0.8 ug CoraLite® Plus 488 Mouse IgG1 Isotype Control (MOPC-21) (CL488-65124, Clone: MOPC-21) (blue). Cells were fixed with 4% PFA and permeabilized with Flow Cytometry Perm Buffer (PF00011-C).