

For Research Use Only

CoraLite® Plus 488-conjugated G3BP1 Monoclonal antibody

Catalog Number: CL488-66486



Basic Information

Catalog Number:

CL488-66486

Size:

100ul , Concentration: 1000 ug/ml by Nanodrop;

Source:

Mouse

Isotype:

IgG1

Immunogen Catalog Number:

AG3728

GenBank Accession Number:

BC006997

GeneID (NCBI):

10146

UNIPROT ID:

Q13283

Full Name:

GTPase activating protein (SH3 domain) binding protein 1

Calculated MW:

466 aa, 52 kDa

Observed MW:

68 kDa

Purification Method:

Protein G purification

CloneNo.:

1E4A2

Recommended Dilutions:

IF/ICC 1:50-1:500

Excitation/Emission maxima wavelengths:

493 nm / 522 nm

Applications

Tested Applications:

IF/ICC

Species Specificity:

Human, mouse, rat, pig

Positive Controls:

IF/ICC : sodium arsenite treated HeLa cells,

Background Information

GAP SH3 Binding Protein 1 (G3BP1), also named as G3BP, is an effector of stress granule (SG) assembly. SG biology plays an important role in the pathophysiology of TDP-43 in ALS and FTLD-U. G3BP1 can be used as a marker of SG. It has been shown to function downstream of Ras and play a role in RNA metabolism, signal transduction, and proliferation. G3BP1 is a ubiquitously expressed protein that localizes to the cytoplasm in proliferating cells and to the nucleus in non-proliferating cells. G3BP1 has recently been implicated in cancer biology.

Storage

Storage:

Store at -20°C. Avoid exposure to light. Stable for one year after shipment.

Storage Buffer:

PBS with 50% Glycerol, 0.05% Proclin300, 0.5% BSA, pH 7.3.

Aliquoting is unnecessary for -20°C storage

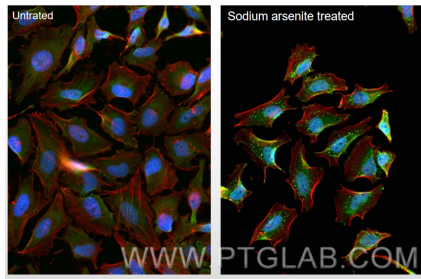
For technical support and original validation data for this product please contact:

T: 1 (888) 4PTGLAB (1-888-478-4522) (toll free in USA), or 1(312) 455-8498 (outside USA)

E: proteintech@ptglab.com
W: ptglab.com

This product is exclusively available under Proteintech Group brand and is not available to purchase from any other manufacturer.

Selected Validation Data



Immunofluorescent analysis of (4% PFA) fixed sodium arsenite treated HeLa cells using Coralite® Plus 488 G3BP1 antibody (CL488-66486, Clone: 1E4A2) at dilution of 1:200, CL594-Phalloidin (red).