

For Research Use Only

# CoraLite® Plus 488-conjugated TRAF6 Monoclonal antibody



Catalog Number: CL488-66498

1 Publications

## Basic Information

<b>Catalog Number:</b> CL488-66498	<b>GenBank Accession Number:</b> BC031052	<b>Purification Method:</b> Protein G purification
<b>Size:</b> 100ul , Concentration: 1000 µg/ml by Nanodrop;	<b>GeneID (NCBI):</b> 7189	<b>CloneNo.:</b> 1D1E1
<b>Source:</b> Mouse	<b>Full Name:</b> TNF receptor-associated factor 6	<b>Recommended Dilutions:</b> IF 1:50-1:500
<b>Isotype:</b> IgG1	<b>Calculated MW:</b> 522 aa, 60 kDa	<b>Excitation/Emission maxima wavelengths:</b> 493 nm / 522 nm
<b>Immunogen Catalog Number:</b> AG24696		

## Applications

<b>Tested Applications:</b> FC (Intra), IF	<b>Positive Controls:</b> IF : HeLa cells,
<b>Cited Applications:</b> IF	
<b>Species Specificity:</b> Human, mouse	
<b>Cited Species:</b> human	

## Background Information

TRAF6 is a member of the TNF receptor associated factor (TRAF) protein family. TRAF6 is recognized as a signal transducer, which activates the NF-κB pathway in response to pro-inflammatory cytokines. TRAF6 has E3 ligase activity and is responsible for inducing Lys-63 (K63)-linked poly-ubiquitination chains, functioning together with E2 Ubc13/Uev1A complex to mediate IKK activation. TRAF6 plays a crucial role in the regulation of the innate and adaptive immune responses.

## Notable Publications

Author	Pubmed ID	Journal	Application
Da Chen	38135696	Cancer Gene Ther	IF

## Storage

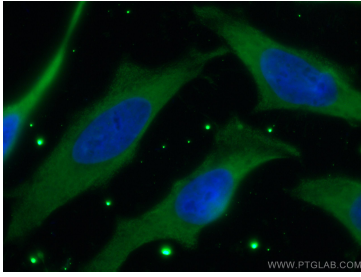
**Storage:**  
Store at -20°C. Avoid exposure to light. Stable for one year after shipment.  
**Storage Buffer:**  
PBS with 50% Glycerol, 0.05% Proclin300, 0.5% BSA, pH 7.3.  
Aliquoting is unnecessary for -20°C storage

\*\*\* 20ul sizes contain 0.1% BSA

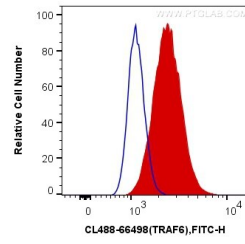
For technical support and original validation data for this product please contact:  
T: 1 (888) 4PTGLAB (1-888-478-4522) (toll free in USA), or 1(312) 455-8498 (outside USA)  
E: proteintech@ptglab.com  
W: ptglab.com

This product is exclusively available under Proteintech Group brand and is not available to purchase from any other manufacturer.

## Selected Validation Data



Immunofluorescent analysis of (-20°C Ethanol) fixed HeLa cells using Coralite® Plus 488-conjugated TRAF6 antibody (CL488-66498, Clone: 1D1E1) at dilution of 1:100.



1X10<sup>6</sup> Jurkat cells were intracellularly stained with 0.4 ug Coralite® Plus 488 Anti-Human TRAF6 (CL488-66498, Clone:1D1E1) (red), or 0.4 ug Mouse IgG1 Isotype Control (CL488-66360, Clone: T1F8D3F10) (blue). Cells were fixed with 4% PFA and permeabilized with Flow Cytometry Perm Buffer (PF00011-C).