

For Research Use Only

# CoraLite® Plus 488-conjugated WWTR1/TAZ Monoclonal antibody

Catalog Number: CL488-66500

Featured Product



## Basic Information

### Catalog Number:

CL488-66500

### Size:

100ul , Concentration: 1000 µg/ml by  
Nanodrop;

### Source:

Mouse

### Isotype:

IgG1

### Immunogen Catalog Number:

AG13330

### GenBank Accession Number:

BC014052

### GeneID (NCBI):

25937

### UNIPROT ID:

Q9GZV5

### Full Name:

WW domain containing transcription  
regulator 1

### Calculated MW:

44 kDa

### Observed MW:

55 kDa

### Purification Method:

Protein G purification

### CloneNo.:

2A12A10

### Recommended Dilutions:

WB 1:500-1:1000

### Excitation/Emission maxima

wavelengths:

493 nm / 522 nm

## Applications

### Tested Applications:

WB

### Species Specificity:

human, mouse, rat

### Positive Controls:

WB : A549 cells, HeLa cells, HepG2 cells, MDA-MB-231  
cells

## Background Information

TAZ, also referred as WWTR1, is a transcriptional co-activator with a PDZ-binding motif that is regulated by its interaction with 14-3-3 protein. TAZ is expressed in many primary tumors, such as breast cancer, thyroid carcinoma, colorectal cancer, and glioma. TAZ has been reported to be one of the nuclear effectors of Hippo-related pathways that regulate organ size control, cancer stem cell (CSC) properties, and epithelial-mesenchymal transition (EMT). TAZ has been defined for its role in the nucleus, where it functions directly as a transcriptional regulator by interacting with several nuclear factors as Runx2/Cbfa1, NHERF-2, TEF-1, TBX5, PAX3, PAX8 and TTF-1.

## Storage

### Storage:

Store at -20°C. Avoid exposure to light. Stable for one year after shipment.

### Storage Buffer:

PBS with 50% Glycerol, 0.05% Proclin300, 0.5% BSA, pH 7.3.

Aliquoting is unnecessary for -20°C storage

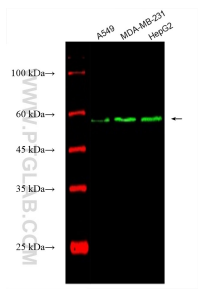
For technical support and original validation data for this product please contact:

T: 1 (888) 4PTGLAB (1-888-478-4522) (toll free  
in USA), or 1(312) 455-8498 (outside USA)

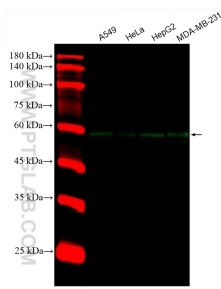
E: [proteintech@ptglab.com](mailto:proteintech@ptglab.com)  
W: [ptglab.com](http://ptglab.com)

This product is exclusively available under Proteintech  
Group brand and is not available to purchase from any  
other manufacturer.

Selected Validation Data



Various lysates were subjected to SDS PAGE followed by western blot with CL488-66500 (WWTR1 antibody) at dilution of 1:800 incubated at room temperature for 1.5 hours.



Various lysates were subjected to SDS PAGE followed by western blot with CL488-66500 (WWTR1 antibody) at dilution of 1:1000 incubated at room temperature for 1.5 hours.