

For Research Use Only

CoraLite®488-conjugated PCCB Monoclonal antibody

Catalog Number:CL488-66501

Featured Product



Basic Information

Catalog Number:

CL488-66501

Size:

100ul , Concentration: 2000 ug/ml by
Nanodrop;

Source:

Mouse

Isotype:

IgG1

Immunogen Catalog Number:

AG1608

GenBank Accession Number:

BC013768

GeneID (NCBI):

5096

UNIPROT ID:

P05166

Full Name:

propionyl Coenzyme A carboxylase,
beta polypeptide

Calculated MW:

58 kDa

Observed MW:

58 kDa

Purification Method:

Protein G purification

CloneNo.:

1A9A5

Recommended Dilutions:

IF-P 1:50-1:500

Excitation/Emission maxima

wavelengths:

491 nm / 516 nm

Applications

Tested Applications:

IF-P

Species Specificity:

human, mouse, rat, pig

Positive Controls:

IF-P : human kidney tissue,

Storage

Storage:

Store at -20°C. Avoid exposure to light. Stable for one year after shipment.

Storage Buffer:

PBS with 50% Glycerol, 0.05% Proclin300, 0.5% BSA, pH 7.3.

Aliquoting is unnecessary for -20°C storage

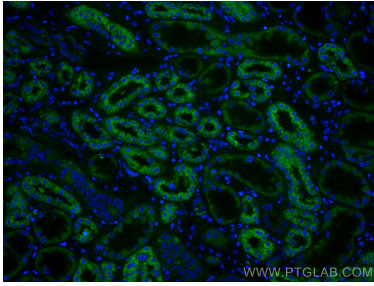
For technical support and original validation data for this product please contact:

T: 1 (888) 4PTGLAB (1-888-478-4522) (toll free
in USA), or 1(312) 455-8498 (outside USA)

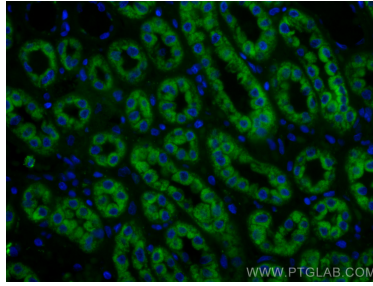
E: proteintech@ptglab.com
W: ptglab.com

This product is exclusively available under Proteintech
Group brand and is not available to purchase from any
other manufacturer.

Selected Validation Data



Immunofluorescent analysis of (4% PFA) fixed human kidney tissue using CoraLite@488 PCCB antibody (CL488-66501, Clone: 1A9A5) at dilution of 1:200.



Immunofluorescent analysis of (4% PFA) fixed human kidney tissue using CoraLite@488 PCCB antibody (CL488-66501, Clone: 1A9A5) at dilution of 1:200.