

For Research Use Only

CoraLite® Plus 488-conjugated MDH1 Monoclonal antibody



Catalog Number: CL488-66505

Featured Product

Basic Information

Catalog Number: CL488-66505	GenBank Accession Number: BC001484	Purification Method: Protein G purification
Size: 100ul , Concentration: 1000 µg/ml by Nanodrop;	GeneID (NCBI): 4190	CloneNo.: 1F9A2
Source: Mouse	Full Name: malate dehydrogenase 1, NAD (soluble)	Recommended Dilutions: IF 1:50-1:500
Isotype: IgG1	Calculated MW: 334 aa, 36 kDa	
Immunogen Catalog Number: AG8744	Observed MW: 36-37 kDa	

Applications

Tested Applications: IF	Positive Controls: IF : HepG2 cells,
Species Specificity: Human, mouse	

Background Information

MDH1 (Malate dehydrogenase, cytoplasmic) is also named as MDHA and belongs to the LDH/MDH superfamily and MDH type 2 family which catalyzes the reversible oxidation of malate to oxaloacetate, utilizing the NAD/NADH cofactor system in the citric acid cycle. It can exist as a dimer and the dimeric MDH1 is the mitochondrial isoenzyme, whereas the tetrameric MDH2 is the glycosomal isoenzyme. (PMID:10693743)

Storage

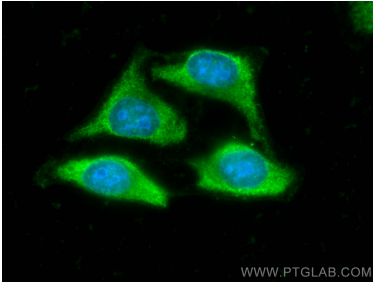
Storage:
Store at -20°C. Avoid exposure to light. Stable for one year after shipment.
Storage Buffer:
PBS with 50% Glycerol, 0.05% Proclin300, 0.5% BSA, pH 7.3.
Aliquoting is unnecessary for -20°C storage

*** 20ul sizes contain 0.1% BSA

For technical support and original validation data for this product please contact:
T: 1 (888) 4PTGLAB (1-888-478-4522) (toll free in USA), or 1(312) 455-8498 (outside USA)
E: proteintech@ptglab.com
W: ptglab.com

This product is exclusively available under Proteintech Group brand and is not available to purchase from any other manufacturer.

Selected Validation Data



Immunofluorescent analysis of (-20°C Ethanol) fixed HepG2 cells using CoraLite® Plus 488 MDH1 antibody (CL488-66505, Clone: 1F9A2) at dilution of 1:200.