

For Research Use Only

CoraLite® Plus 488-conjugated SP1 Monoclonal antibody

Catalog Number: CL488-66508



Basic Information

Catalog Number: CL488-66508	GenBank Accession Number: BC062539	Purification Method: Protein G purification
Size: 100ul , Concentration: 1000 ug/ml by Nanodrop;	GeneID (NCBI): 6667	CloneNo.: 4G3H3
Source: Mouse	ENSEMBL Gene ID: ENSG00000185591	Recommended Dilutions: IF-P 1:50-1:500 IF/ICC 1:50-1:500
Isotype: IgG1	UNIPROT ID: P08047	Excitation/Emission maxima wavelengths: 493 nm / 522 nm
Immunogen Catalog Number: AG16720	Full Name: Sp1 transcription factor	
	Calculated MW: 785 aa, 81 kDa	
	Observed MW: 95-105 kDa, 60-65 kDa	

Applications

Tested Applications: IF/ICC, IF-P, FC (Intra)	Positive Controls:
Species Specificity: human, mouse, rat	IF-P : human colon cancer tissue, IF/ICC : HEK-293 cells, human colon cancer tissue

Background Information

The transcription factor Sp1 is a C2H2 zinc-finger protein that is involved in the regulation of a wide variety of genes, including housekeeping genes and tumor-developing genes. It is associated with tumor development, growth, and metastasis [PMID: 16209919]. It regulates the expression of a large number of genes involved in a variety of processes such as cell growth, apoptosis, differentiation and immune responses. Besides, it has a role in modulating the cellular response to DNA damage, recruiting SMARCA4/BRG1 on the c-FOS promoter, regulation of FE65 gene expression [PMID:11371615,16332679]. SP1 has some isoforms with MW ~95-106 kDa and ~60 kDa [PMID:17462816].

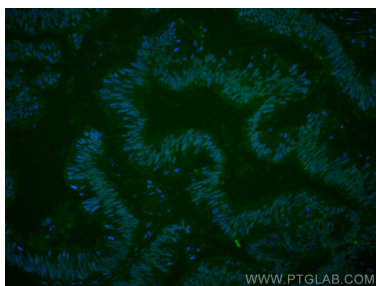
Storage

Storage:
Store at -20°C. Avoid exposure to light. Stable for one year after shipment.
Storage Buffer:
PBS with 50% Glycerol, 0.05% Proclin300, 0.5% BSA, pH 7.3.
Aliquoting is unnecessary for -20°C storage

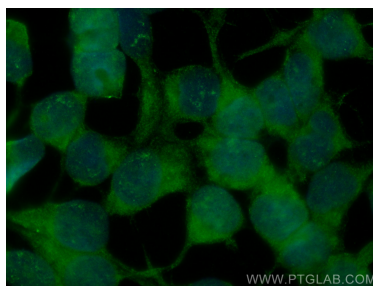
For technical support and original validation data for this product please contact:
T: 1 (888) 4PTGLAB (1-888-478-4522) (toll free in USA), or 1(312) 455-8498 (outside USA)
E: proteintech@ptglab.com
W: ptglab.com

This product is exclusively available under Proteintech Group brand and is not available to purchase from any other manufacturer.

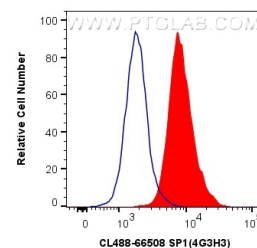
Selected Validation Data



Immunofluorescent analysis of (4% PFA) fixed human colon cancer tissue using CoraLite® Plus 488 SP1 antibody (CL488-66508, Clone: 4G3H3) at dilution of 1:200.



Immunofluorescent analysis of (-20°C Ethanol) fixed HEK-293 cells using CoraLite® Plus 488 SP1 antibody (CL488-66508, Clone: 4G3H3) at dilution of 1:200.



1X10⁶ HEK-293 cells were intracellularly stained with 0.8 ug CoraLite® Plus 488 Anti-Human SP1 (CL488-66508, Clone:4G3H3) (red), or 0.8 ug CoraLite® Plus 488 Mouse IgG1 Isotype Control (MOPC-21) (CL488-65124, Clone: MOPC-21) (blue). Cells were fixed with 4% PFA and permeabilized with Flow Cytometry Perm Buffer (PF00011-C).