

For Research Use Only

CoraLite®488-conjugated PARP1 Monoclonal antibody

Catalog Number: CL488-66520

Featured Product



Basic Information

Catalog Number:	GenBank Accession Number:	Purification Method:
CL488-66520	BC037545	Protein G purification
Size:	GeneID (NCBI):	CloneNo.:
100ul , Concentration: 1000 ug/ml by Nanodrop;	142	1D7D4
Source:	UNIPROT ID:	Recommended Dilutions:
Mouse	P09874	IF-P 1:50-1:500
Isotype:	Full Name:	IF/ICC 1:800-1:3200
IgG1	poly (ADP-ribose) polymerase 1	Excitation/Emission maxima wavelengths:
Immunogen Catalog Number:	Calculated MW:	491 nm / 516 nm
AG19173	1014 aa, 113 kDa	

Applications

Tested Applications:	Positive Controls:
IF/ICC, IF-P, FC (Intra)	IF-P : human lung cancer tissue, Neuro-2a cells
Species Specificity:	IF/ICC : Neuro-2a cells,
human, mouse	

Background Information

PARP1 (poly(ADP-ribose) polymerase 1) is a nuclear enzyme catalyzing the poly(ADP-ribosyl)ation of many key proteins in vivo. The normal function of PARP1 is the routine repair of DNA damage. Activated by DNA strand breaks, the PARP1 is cleaved into an 85 to 89-kDa COOH-terminal fragment and a 24-kDa NH2-terminal peptide by caspases during the apoptotic process. The appearance of PARP fragments is commonly considered as an important biomarker of apoptosis. In addition to caspases, other proteases like calpains, cathepsins, granzymes and matrix metalloproteinases (MMPs) have also been reported to cleave PARP1 and gave rise to fragments ranging from 42-89-kD. This antibody was generated against the N-terminal region of human PARP1 and it recognizes the full-length as well as the cleavage of the PARP1.

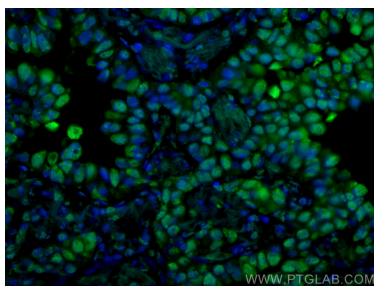
Storage

Storage:
Store at -20°C. Avoid exposure to light. Stable for one year after shipment.
Storage Buffer:
PBS with 50% Glycerol, 0.05% Proclin300, 0.5% BSA, pH 7.3.
Aliquoting is unnecessary for -20°C storage

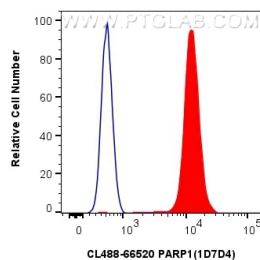
For technical support and original validation data for this product please contact:
T: 1 (888) 4PTGLAB (1-888-478-4522) (toll free in USA), or 1(312) 455-8498 (outside USA)
E: proteintech@ptglab.com
W: ptglab.com

This product is exclusively available under Proteintech Group brand and is not available to purchase from any other manufacturer.

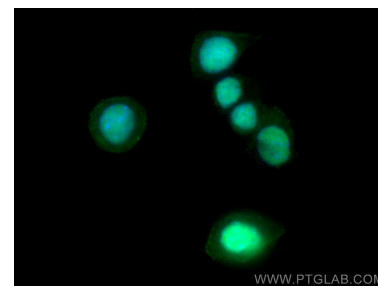
Selected Validation Data



Immunofluorescent analysis of (4% PFA) fixed human lung cancer tissue using CoraLite®488 PARP1 antibody (CL488-66520, Clone: 1D7D4) at dilution of 1:200.



1X10⁶ Jurkat cells were intracellularly stained with 0.4 ug CoraLite®488 Anti-Human PARP1 (CL488-66520, Clone:1D7D4) (red), or 0.4 ug CoraLite® Plus 488 Mouse IgG1 Isotype Control (MOPC-21) (CL488-65124, Clone: MOPC-21) (blue). Cells were fixed and permeabilized with True-Nuclear Transcription Factor Buffer Set.



Immunofluorescent analysis of (4% PFA) fixed Neuro-2a cells using CoraLite®488 PARP1 antibody (CL488-66520, Clone: 1D7D4) at dilution of 1:1600.