

For Research Use Only

CoraLite® Plus 488-conjugated IGF2BP3 Monoclonal antibody

Catalog Number: CL488-66526



Basic Information

Catalog Number: CL488-66526	GenBank Accession Number: BC065269	Purification Method: Protein G purification
Size: 100ul , Concentration: 1000 ug/ml by Nanodrop;	GeneID (NCBI): 10643	CloneNo.: 2C10B11
Source: Mouse	UNIPROT ID: O00425	Recommended Dilutions: IF/ICC 1:50-1:500
Isotype: IgG1	Full Name: insulin-like growth factor 2 mRNA binding protein 3	Excitation/Emission maxima wavelengths: 493 nm / 522 nm
Immunogen Catalog Number: AG6349	Calculated MW: 64 kDa	
	Observed MW: 65 kDa	

Applications

Tested Applications: IF/ICC	Positive Controls: IF/ICC : MCF-7 cells,
Species Specificity: Human, mouse, rat	

Background Information

IGF2BP3, also named as IMP3, KOC1 and VICKZ3, belongs to the RRM1IMP/VICKZ family. It is one of the RNA binding proteins involved in mRNA localization and translational control. IGF2BP3 is expressed during embryogenesis, as well as in some malignant tumors. It can be used as an independent prognostic factor for osteosarcoma.

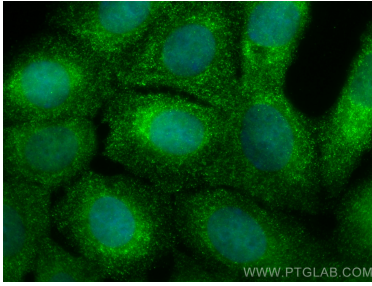
Storage

Storage:
Store at -20°C. Avoid exposure to light. Stable for one year after shipment.
Storage Buffer:
PBS with 50% Glycerol, 0.05% Proclin300, 0.5% BSA, pH 7.3.
Aliquoting is unnecessary for -20°C storage

For technical support and original validation data for this product please contact:
T: 1 (888) 4PTGLAB (1-888-478-4522) (toll free in USA), or 1(312) 455-8498 (outside USA)
E: proteintech@ptglab.com
W: ptglab.com

This product is exclusively available under Proteintech Group brand and is not available to purchase from any other manufacturer.

Selected Validation Data



Immunofluorescent analysis of (4% PFA) fixed MCF-7 cells using CoraLite® Plus 488 IGF2BP3 antibody (CL488-66526, Clone: 2C10B11) at dilution of 1:200.