

For Research Use Only

CoraLite® Plus 488-conjugated HLA-E Monoclonal antibody

Catalog Number:CL488-66530



Basic Information

Catalog Number: CL488-66530	GenBank Accession Number: BC002578	Purification Method: Protein A purification
Size: 100ul , Concentration: 1000 ug/ml by Nanodrop;	GeneID (NCBI): 3133	CloneNo.: 1A4G3
Source: Mouse	UNIPROT ID: P13747	Recommended Dilutions: WB 1:1000-1:4000
Isotype: IgG2a	Full Name: major histocompatibility complex, class I, E	Excitation/Emission maximum wavelengths: 493 nm / 522 nm
Immunogen Catalog Number: AG6724	Calculated MW: 40 kDa	
	Observed MW: 40 kDa	

Applications

Tested Applications: WB	Positive Controls: WB : Raji cells,
Species Specificity: Human	

Background Information

Human major histocompatibility complex (MHC) antigens, also referred to as human leukocyte antigens (HLA), are encoded by genes located on the short arm of chromosome 6 (6p21.3). There are two classes of HLA antigens: class I and class II. This class I molecules are membrane glycoproteins composed of a heavy (alpha) chain which is encoded by a HLA class I gene, and β 2-microglobulin light (beta) chain. The most extensively characterized members of the HLA class I gene family are the genes encoding the major transplantation antigens, HLA-A, B and C. HLA-E is a non-classical MHC class I molecule. HLA-E is frequently overexpressed in tumor diseases, transplants and virus-infected cells and represents an immunomodulatory molecule by binding to the receptors CD94/NKG2A, -B and -C on NK and T cells. Due to its immune suppressive features HLA-E expression might represent an important mechanism of tumors to escape immune surveillance.(PMID: 667938; 3375250; 2249951; 27589686)

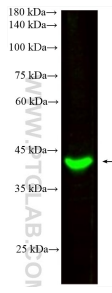
Storage

Storage:
Store at -20°C. Avoid exposure to light. Stable for one year after shipment.
Storage Buffer:
PBS with 50% Glycerol, 0.05% Proclin300, 0.5% BSA, pH 7.3.
Aliquoting is unnecessary for -20°C storage

For technical support and original validation data for this product please contact:
T: 1 (888) 4PTGLAB (1-888-478-4522) (toll free in USA), or 1(312) 455-8498 (outside USA)
E: proteintech@ptglab.com
W: ptglab.com

This product is exclusively available under Proteintech Group brand and is not available to purchase from any other manufacturer.

Selected Validation Data



Raji cells were subjected to SDS PAGE followed by western blot with CL488-66530 (HLA-E antibody) at dilution of 1:2000 incubated at room temperature for 1.5 hours.