

For Research Use Only

# CoraLite® Plus 488-conjugated EXOC3L2 Monoclonal antibody

Catalog Number:CL488-66537



## Basic Information

<b>Catalog Number:</b> CL488-66537	<b>GenBank Accession Number:</b> BC104947	<b>Purification Method:</b> Protein G purification
<b>Size:</b> 100ul , Concentration: 1000 ug/ml by Nanodrop;	<b>GeneID (NCBI):</b> 90332	<b>CloneNo.:</b> 3C1C2
<b>Source:</b> Mouse	<b>UNIPROT ID:</b> Q2M3D2	<b>Recommended Dilutions:</b> IF/ICC 1:50-1:500
<b>Isotype:</b> IgG1	<b>Full Name:</b> exocyst complex component 3-like 2	<b>Excitation/Emission maxima wavelengths:</b> 493 nm / 522 nm
<b>Immunogen Catalog Number:</b> AG26912	<b>Calculated MW:</b> 46 kDa	
	<b>Observed MW:</b> 46 kDa	

## Applications

<b>Tested Applications:</b> IF/ICC	<b>Positive Controls:</b> IF/ICC : HUVEC cells,
<b>Species Specificity:</b> Human	

## Background Information

The exocyst is a protein complex that ensures spatial targeting of exocytotic vesicles to the plasma membrane. Exocyst complex component 3-like 2 (EXOC3L2) associates with the exocyst complex and mediates directional migration of endothelial cells (PMID: 21566143). The gene of human EXOC3L2 maps to chromosome 19q13.32 and encodes a deduced 409-amino acid protein with a calculated molecular mass of about 46 kDa. Mouse Exoc3l2 gene encodes an approximately 250-amino acid protein that lacks the N-terminal domain of human EXOC3L2. Mutations in EXOC3L2 gene may be associated with Alzheimer's disease.

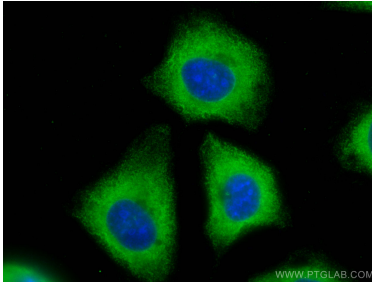
## Storage

**Storage:**  
Store at -20°C. Avoid exposure to light. Stable for one year after shipment.  
**Storage Buffer:**  
PBS with 50% Glycerol, 0.05% Proclin300, 0.5% BSA, pH 7.3.  
**Aliquoting is unnecessary for -20°C storage**

For technical support and original validation data for this product please contact:  
T: 1 (888) 4PTGLAB (1-888-478-4522) (toll free in USA), or 1(312) 455-8498 (outside USA)  
E: [proteintech@ptglab.com](mailto:proteintech@ptglab.com)  
W: [ptglab.com](http://ptglab.com)

This product is exclusively available under Proteintech Group brand and is not available to purchase from any other manufacturer.

## Selected Validation Data



Immunofluorescent analysis of (-20°C Methanol)  
fixed HUVEC cells using CoraLite® Plus 488  
EXOC3L2 antibody (CL488-66537, Clone: 3C1C2 ) at  
dilution of 1:200.