

For Research Use Only

CoraLite® Plus 488-conjugated RYR1 Monoclonal antibody



Catalog Number: CL488-66539

Basic Information

| | | |
|---|--|---|
| Catalog Number: CL488-66539 | GenBank Accession Number: NM_000540 | Purification Method: Protein G purification |
| Size: 100ul , Concentration: 1000 µg/ml by Nanodrop; | GeneID (NCBI): 6261 | CloneNo.: 1B4E12 |
| Source: Mouse | Full Name: ryanodine receptor 1 (skeletal) | Recommended Dilutions: IF 1:50-1:500 |
| Isotype: IgG1 | Calculated MW: 565 kDa | Excitation/Emission maxima wavelengths: 493 nm / 522 nm |
| Immunogen Catalog Number: AG25120 | | |

Applications

| | |
|---|--|
| Tested Applications: FC (Intra), IF | Positive Controls: IF : PC-12 cells, |
| Species Specificity: Human, rat | |

Background Information

Ryanodine receptor isoform-1 (RyR1) is a major calcium channel in skeletal muscle important for excitation-contraction coupling. The transmembrane region of RyR1 is comprised of two domains including the pseudo voltage sensor domain and the pore-forming domain (PMID: 27855725). Dominant RyR1 mutations are the leading cause of MH. Studies on the Ca²⁺ conducting properties of RyR1 channels containing Malignant hyperthermia mutations expressed in myotubes.

Storage

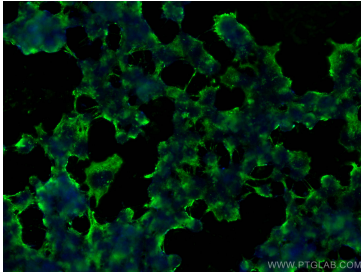
Storage:
Store at -20°C. Avoid exposure to light. Stable for one year after shipment.
Storage Buffer:
PBS with 50% Glycerol, 0.05% Proclin300, 0.5% BSA, pH 7.3.
Aliquoting is unnecessary for -20°C storage

*** 20ul sizes contain 0.1% BSA

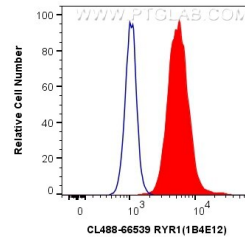
For technical support and original validation data for this product please contact:
T: 1 (888) 4PTGLAB (1-888-478-4522) (toll free in USA), or 1(312) 455-8498 (outside USA)
E: proteintech@ptglab.com
W: ptglab.com

This product is exclusively available under Proteintech Group brand and is not available to purchase from any other manufacturer.

Selected Validation Data



Immunofluorescent analysis of (-20°C Ethanol) fixed PC-12 cells using CoraLite® Plus 488 RYR1 antibody (CL488-66539, Clone: 1B4E12) at dilution of 1:100.



1X10⁶ SH-SY5Y cells were intracellularly stained with 0.8 ug CoraLite® Plus 488 Anti-Human RYR1 (CL488-66539, Clone:1B4E12) (red), or 0.8 ug CoraLite® Plus 488 Mouse IgG1 Isotype Control (MOPC-21) (CL488-65124, Clone: MOPC-21) (blue). Cells were fixed with 4% PFA and permeabilized with Flow Cytometry Perm Buffer (PF00011-C).