

For Research Use Only

CoraLite® Plus 488-conjugated HuR/ELAVL1 Monoclonal antibody

Catalog Number: CL488-66549

Featured Product



Basic Information

Catalog Number:

CL488-66549

Size:

100ul , Concentration: 1000 ug/ml by
Nanodrop;

Source:

Mouse

Isotype:

IgG2a

Immunogen Catalog Number:

AG2249

GenBank Accession Number:

BC003376

GeneID (NCBI):

1994

UNIPROT ID:

Q15717

Full Name:

ELAV (embryonic lethal, abnormal
vision, Drosophila)-like 1 (Hu antigen 493 nm / 522 nm
R)

Calculated MW:

326 aa, 36 kDa

Observed MW:

37 kDa

Purification Method:

Protein A purification

CloneNo.:

1A11H2

Recommended Dilutions:

IF/ICC 1:50-1:500

Excitation/Emission maxima
wavelengths:

Applications

Tested Applications:

IF/ICC

Species Specificity:

Human, mouse, rat

Positive Controls:

IF/ICC : L02 cells, HepG2 cells

Background Information

ELAVL1, also named as HUR, belongs to the RRM elav family. It is involved in 3'-UTR ARE-mediated MYC stabilization. ELAVL1 binds avidly to the AU-rich element in FOS and IL3/interleukin-3 mRNAs. In the case of the FOS AU-rich element, ELAVL1 binds to a core element of 27 nucleotides that contain AUUUA, AUUUUA and AUUUUUA motifs.

Storage

Storage:

Store at -20°C. Avoid exposure to light. Stable for one year after shipment.

Storage Buffer:

PBS with 50% Glycerol, 0.05% Proclin300, 0.5% BSA, pH 7.3.

Aliquoting is unnecessary for -20°C storage

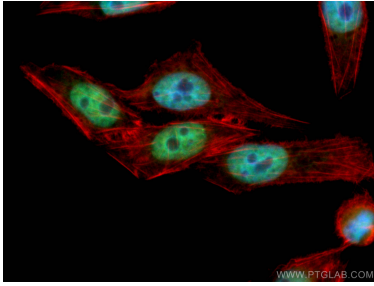
For technical support and original validation data for this product please contact:

T: 1 (888) 4PTGLAB (1-888-478-4522) (toll free
in USA), or 1(312) 455-8498 (outside USA)

E: proteintech@ptglab.com
W: ptglab.com

This product is exclusively available under Proteintech Group brand and is not available to purchase from any other manufacturer.

Selected Validation Data



Immunofluorescent analysis of (4% PFA) fixed L02 cells using CoraLite® Plus 488-conjugated HuR/ELAVL1 antibody (CL488-66549, Clone: 1A11H2) at dilution of 1:100, CL594-Phalloidin (red).



Immunofluorescent analysis of (4% PFA) fixed HepG2 cells using CoraLite® Plus 488 HuR antibody (CL488-66549, Clone: 1A11H2) at dilution of 1:800.