

For Research Use Only

CoraLite® Plus 488-conjugated PLDN Monoclonal antibody

Catalog Number: CL488-66558



Basic Information

Catalog Number: CL488-66558	GenBank Accession Number: BC004819	Purification Method: Protein G purification
Size: 100ul , Concentration: 1000 ug/ml by Nanodrop;	GeneID (NCBI): 26258	CloneNo.: 4F4C11
Source: Mouse	UNIPROT ID: Q9UL45	Recommended Dilutions: IF/ICC 1:50-1:500
Isotype: IgG1	Full Name: pallidin homolog (mouse)	Excitation/Emission maxima wavelengths: 493 nm / 522 nm
Immunogen Catalog Number: AG18095	Calculated MW: 23~24 kDa	
	Observed MW: 26 kDa	

Applications

Tested Applications: IF/ICC	Positive Controls: IF/ICC : MCF-7 cells,
Species Specificity: Human, Mouse, Rat	

Background Information

Pallidin, also named as PLDN and PA, is involved in the development of lysosome-related organelles, such as melanosomes and platelet-dense granules. It may play a role in intracellular vesicle trafficking, particularly in the vesicle-docking and fusion process. Pallidin interacts with syntaxin-12 which is a t-SNARE protein that mediates vesicle docking and fusion.

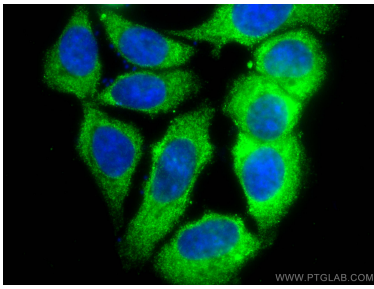
Storage

Storage:
Store at -20°C. Avoid exposure to light. Stable for one year after shipment.
Storage Buffer:
PBS with 50% Glycerol, 0.05% Proclin300, 0.5% BSA, pH 7.3.
Aliquoting is unnecessary for -20°C storage

For technical support and original validation data for this product please contact:
T: 1 (888) 4PTGLAB (1-888-478-4522) (toll free in USA), or 1(312) 455-8498 (outside USA)
E: proteintech@ptglab.com
W: ptglab.com

This product is exclusively available under Proteintech Group brand and is not available to purchase from any other manufacturer.

Selected Validation Data



Immunofluorescent analysis of (-20°C Methanol) fixed MCF-7 cells using CoraLite® Plus 488 PLDN antibody (CL488-66558, Clone: 4F4C11) at dilution of 1:200.