

For Research Use Only

CoraLite® Plus 488-conjugated Tom22 Monoclonal antibody

Catalog Number: CL488-66562



Basic Information

Catalog Number:

CL488-66562

Size:

100ul , Concentration: 1000 ug/ml by Nanodrop;

Source:

Mouse

Isotype:

IgG2a

Immunogen Catalog Number:

AG1797

GenBank Accession Number:

BC009363

GeneID (NCBI):

56993

UNIPROT ID:

Q9NS69

Full Name:

translocase of outer mitochondrial membrane 22 homolog (yeast)

Calculated MW:

15 kDa

Observed MW:

22 kDa

Purification Method:

Protein A purification

CloneNo.:

1C2B11

Recommended Dilutions:

IF/ICC 1:50-1:500

Excitation/Emission maxima wavelengths:

493 nm / 522 nm

Applications

Tested Applications:

IF/ICC, FC (Intra)

Species Specificity:

human

Positive Controls:

IF/ICC : HepG2 cells,

Background Information

TOMM22 is a central receptor component of the translocase of the outer membrane of mitochondria responsible for the recognition and translocation of cytosolically synthesized mitochondrial preproteins. It is showed in UniProt that phosphorylation is performed at three positions of this protein which may increase the molecular weight. Catalog#66562-1-Ig recognises the 22 kDa protein larger than the calculated MW which is 15 kDa. Besides, it has been reported the MV of TOMM22 is 22 kDa (PMID:19285029).

Storage

Storage:

Store at -20°C. Avoid exposure to light. Stable for one year after shipment.

Storage Buffer:

PBS with 50% Glycerol, 0.05% Proclin300, 0.5% BSA, pH 7.3.

Aliquoting is unnecessary for -20°C storage

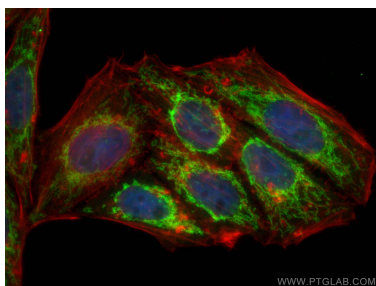
For technical support and original validation data for this product please contact:

T: 1 (888) 4PTGLAB (1-888-478-4522) (toll free in USA), or 1(312) 455-8498 (outside USA)

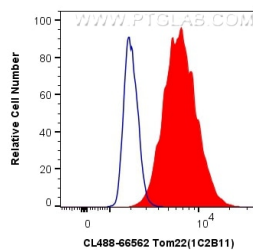
E: proteintech@ptglab.com
W: ptglab.com

This product is exclusively available under Proteintech Group brand and is not available to purchase from any other manufacturer.

Selected Validation Data



Immunofluorescent analysis of (4% PFA) fixed HepG2 cells using CoraLite® Plus 488 Tom22 antibody (CL488-66562, Clone: 1C2B11) at dilution of 1:200, CL594-Phalloidin (red).



1X10⁶ HEK-293 cells were intracellularly stained with 0.8 ug CoraLite® Plus 488 Anti-Human Tom22 (CL488-66562, Clone:1C2B11) (red), or 0.8 ug CoraLite® Plus 488 Mouse IgG2a Isotype Control (C1.18.4) (CL488-65208, Clone: C1.18.4) (blue). Cells were fixed with 4% PFA and permeabilized with Flow Cytometry Perm Buffer (PF00011-C).