

For Research Use Only

CoraLite® Plus 488-conjugated CIN85 Monoclonal antibody

Catalog Number:CL488-66571



Basic Information

Catalog Number: CL488-66571	GenBank Accession Number: BC015806	Purification Method: Protein G purification
Size: 100ul , Concentration: 1000 ug/ml by Nanodrop;	GeneID (NCBI): 30011	CloneNo.: 3C12D2
Source: Mouse	UNIPROT ID: Q96B97	Recommended Dilutions: WB 1:500-1:1000
Isotype: IgG1	Full Name: SH3-domain kinase binding protein 1	Excitation/Emission maxima wavelengths: 493 nm / 522 nm
Immunogen Catalog Number: AG2777	Calculated MW: 665 aa, 73 kDa	
	Observed MW: 85 kDa	

Applications

Tested Applications: WB	Positive Controls: WB : K-562 cells, THP-1 cells, HL-60 cells, Jurkat cells
Species Specificity: Human, mouse, rat	

Background Information

CIN85 is identified as a Cbl-interacting protein of 85 kDa and belongs to adaptor/scaffold proteins. It composed of three N-terminal SH3 domains followed by a proline-rich region and a C-terminal coiled-coil region. In association with c-Cbl (Casitas B-lineage lymphoma), an E3 ubiquitin ligase. As an adaptor protein, CIN85 is involved in Cbl-dependent EGFR internalization, intracellular receptor trafficking, sorting and degradation. Moreover, through the SH3 domains and the proline-rich region, CIN85 is implicated in many protein-protein interactions and it is found to play important roles in other processes such as apoptosis, rearrangement of actin cytoskeleton, cell adhesion, immunological synapse, cell migration and invasion.

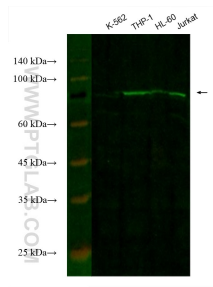
Storage

Storage:
Store at -20°C. Avoid exposure to light. Stable for one year after shipment.
Storage Buffer:
PBS with 50% Glycerol, 0.05% Proclin300, 0.5% BSA, pH 7.3.
Aliquoting is unnecessary for -20°C storage

For technical support and original validation data for this product please contact:
T: 1 (888) 4PTGLAB (1-888-478-4522) (toll free in USA), or 1(312) 455-8498 (outside USA)
E: proteintech@ptglab.com
W: ptglab.com

This product is exclusively available under Proteintech Group brand and is not available to purchase from any other manufacturer.

Selected Validation Data



Various lysates were subjected to SDS PAGE followed by western blot with CL488-66571 (CIN85 antibody) at dilution of 1:500 incubated at room temperature for 1.5 hours.