

For Research Use Only

CoraLite® Plus 488-conjugated CHST4 Monoclonal antibody

Catalog Number: CL488-66623

Featured Product



Basic Information

Catalog Number:

CL488-66623

Size:

100ul , Concentration: 1000 ug/ml by
Nanodrop;

Source:

Mouse

Isotype:

IgG1

Immunogen Catalog Number:

AG3987

GenBank Accession Number:

BC035282

GeneID (NCBI):

10164

UNIPROT ID:

Q8NCG5

Full Name:

carbohydrate (N-acetylglucosamine
6-O) sulfotransferase 4

Calculated MW:

370 aa, 43 kDa

Observed MW:

48 kDa

Purification Method:

Protein G purification

CloneNo.:

1E1A4

Recommended Dilutions:

IF/ICC 1:50-1:500

**Excitation/Emission maxima
wavelengths:**

493 nm / 522 nm

Applications

Tested Applications:

IF/ICC

Species Specificity:

Human

Positive Controls:

IF/ICC : HeLa cells,

Background Information

CHST4, also named as HEC GlcNAc6ST and GlcNAc6ST 2, is one of a major GlcNAc-6-O-sulfotransferases involved in synthesizing the L-selectin ligands mediating lymphocyte homing. CHST4 is associated with the expression of MECA-79 epitope on HEV. It has been reported that the transcripts of CHST4 can be detected in lymph node, liver, pancreas and high endothelial venules (HEVs) but at a low level in HUVECs. Besides, CHST4 is expressed at a high level in gastric and colorectal cancer patients compared with normal mucosa. (PMID:30093410, 27748735, 10330415)

Storage

Storage:

Store at -20°C. Avoid exposure to light. Stable for one year after shipment.

Storage Buffer:

PBS with 50% Glycerol, 0.05% Proclin300, 0.5% BSA, pH 7.3.

Aliquoting is unnecessary for -20°C storage

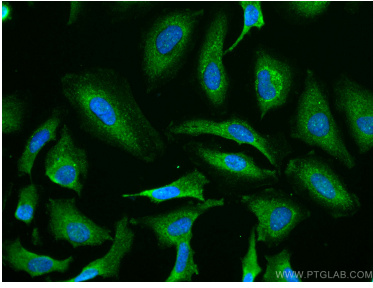
For technical support and original validation data for this product please contact:

T: 1 (888) 4PTGLAB (1-888-478-4522) (toll free
in USA), or 1(312) 455-8498 (outside USA)

E: proteintech@ptglab.com
W: ptglab.com

This product is exclusively available under Proteintech Group brand and is not available to purchase from any other manufacturer.

Selected Validation Data



Immunofluorescent analysis of (-20°C Ethanol) fixed HeLa cells using CoraLite® Plus 488 CHST4 antibody (CL488-66623, Clone: 1E1A4) at dilution of 1:200.