

For Research Use Only

CoraLite® Plus 488-conjugated RIC8A Monoclonal antibody



Catalog Number: **CL488-66625**

Basic Information

Catalog Number: CL488-66625	GenBank Accession Number: BC011821	Purification Method: Protein G purification
Size: 100ul , Concentration: 1000 µg/ml by Nanodrop;	GeneID (NCBI): 60626	CloneNo.: 1E3B11
Source: Mouse	Full Name: resistance to inhibitors of cholinesterase 8 homolog A (C. elegans)	Recommended Dilutions: IF 1:50-1:500
Isotype: IgG1	Calculated MW: 60 kDa	Excitation/Emission maxima wavelengths: 488 nm / 515 nm
Immunogen Catalog Number: AG1593	Observed MW: 65 kDa	

Applications

Tested Applications: IF	Positive Controls: IF : mouse brain tissue,
Species Specificity: Human, Rat, Mouse	

Background Information

RIC8A, also named as synembryn-A, is a Guanine nucleotide exchange factor (GEF), which can activate some, but not all, G-alpha proteins by exchanging bound GDP for free GTP. It is involved in regulation of microtubule pulling forces during mitotic movement of chromosomes by stimulating G(i)-alpha protein, possibly leading to release G(i)-alpha-GTP and NuMA proteins from the NuMA-GPSM2-G(i)-alpha-GDP complex. RIC8A also acts as an activator for G(q)-alpha (GNAQ) protein by enhancing the G(q)-coupled receptor-mediated ERK activation.

Storage

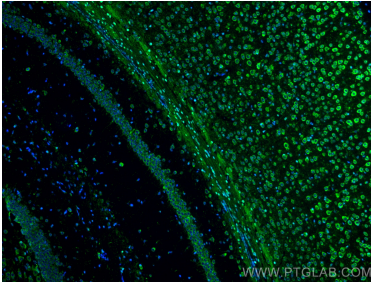
Storage:
Store at -20°C. Avoid exposure to light.
Storage Buffer:
PBS with 50% Glycerol, 0.05% Proclin300, 0.5% BSA, pH 7.3.
Aliquoting is unnecessary for -20°C storage

***** 20ul sizes contain 0.1% BSA**

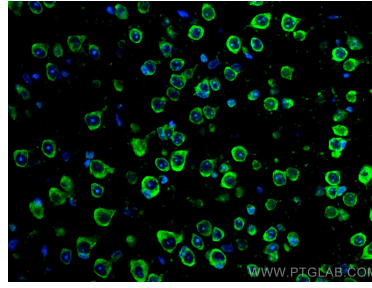
For technical support and original validation data for this product please contact:
T: 1 (888) 4PTGLAB (1-888-478-4522) (toll free in USA), or 1(312) 455-8498 (outside USA)
E: proteintech@ptglab.com
W: ptglab.com

This product is exclusively available under Proteintech Group brand and is not available to purchase from any other manufacturer.

Selected Validation Data



Immunofluorescent analysis of (4% PFA) fixed mouse brain tissue using CoraLite® Plus 488 RIC8A antibody (CL488-66625, Clone: 1E3B11) at dilution of 1:200.



Immunofluorescent analysis of (4% PFA) fixed mouse brain tissue using CoraLite® Plus 488 RIC8A antibody (CL488-66625, Clone: 1E3B11) at dilution of 1:200.