

For Research Use Only

# CoraLite® Plus 488-conjugated FAF2 Monoclonal antibody

Catalog Number: CL488-66629

Featured Product



## Basic Information

Catalog Number:

CL488-66629

Size:

100ul , Concentration: 1000 ug/ml by Nanodrop;

Source:

Mouse

Isotype:

IgG1

Immunogen Catalog Number:

AG21536

GenBank Accession Number:

BC014001

GeneID (NCBI):

23197

UNIPROT ID:

Q96CS3

Full Name:

Fas associated factor family member

2

Calculated MW:

445 aa, 53 kDa

Observed MW:

51 kDa

Purification Method:

Protein G purification

CloneNo.:

3H6D2

Recommended Dilutions:

WB 1:500-1:1000

Excitation/Emission maxima

wavelengths:

493 nm / 522 nm

## Applications

Tested Applications:

WB

Species Specificity:

human, mouse

Positive Controls:

WB : HeLa cells,

## Background Information

Protein ETEA (FAF2, or UBXD8) is a homolog to Fas-associated factor 1 (FAF1), which is involved in Fas-mediated apoptosis. ETEA protein directly interacts with and negatively regulates neurofibromin. ETEA contains both UBA and UBX domains and overexpression of ETEA downregulates neurofibromin in human cells. It may play a role in the translocation of terminally misfolded proteins from the endoplasmic reticulum lumen to the cytoplasm and their degradation by the proteasome. ETEA is highly expressed in peripheral blood of patients with atopic dermatitis (AD) compared to normal individuals, and may regulate the resistance to apoptosis that is observed in T cells and eosinophils of AD patients.

## Storage

Storage:

Store at -20°C. Avoid exposure to light. Stable for one year after shipment.

Storage Buffer:

PBS with 50% Glycerol, 0.05% Proclin300, 0.5% BSA, pH 7.3.

Aliquoting is unnecessary for -20°C storage

For technical support and original validation data for this product please contact:

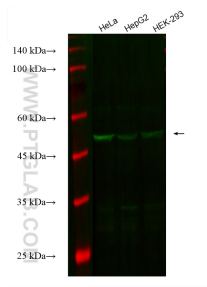
T: 1 (888) 4PTGLAB (1-888-478-4522) (toll free in USA), or 1(312) 455-8498 (outside USA)

E: [proteintech@ptglab.com](mailto:proteintech@ptglab.com)

W: [ptglab.com](http://ptglab.com)

This product is exclusively available under Proteintech Group brand and is not available to purchase from any other manufacturer.

## Selected Validation Data



Various lysates were subjected to SDS PAGE followed by western blot with CL488-66629 (FAF2 antibody) at dilution of 1:500 incubated at room temperature for 1.5 hours.