

For Research Use Only

CoraLite® Plus 488-conjugated IGFBP2 Monoclonal antibody

Catalog Number:CL488-66644



Basic Information

Catalog Number: CL488-66644	GenBank Accession Number: BC004312	Purification Method: Protein G purification
Size: 100ul , Concentration: 1000 ug/ml by Nanodrop;	GeneID (NCBI): 3485	CloneNo.: 2F10D1
Source: Mouse	UNIPROT ID: P18065	Recommended Dilutions: IF/ICC 1:50-1:500
Isotype: IgG1	Full Name: IGF binding protein 2	Excitation/Emission maxima wavelengths: 493 nm / 522 nm
Immunogen Catalog Number: AG8421	Calculated MW: 36 kDa	
	Observed MW: 36 kDa	

Applications

Tested Applications: IF/ICC, FC (Intra)	Positive Controls: IF/ICC : MCF-7 cells,
Species Specificity: Human, Mouse, rat	

Background Information

Insulin-like growth factors (IGFs) and their binding proteins (IGFBPs) have important metabolic roles in the human body. The levels of IGFBP2 are elevated during progression of many human cancers.

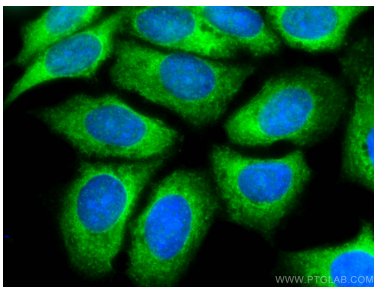
Storage

Storage:
Store at -20°C. Avoid exposure to light. Stable for one year after shipment.
Storage Buffer:
PBS with 50% Glycerol, 0.05% Proclin300, 0.5% BSA, pH 7.3.
Aliquoting is unnecessary for -20°C storage

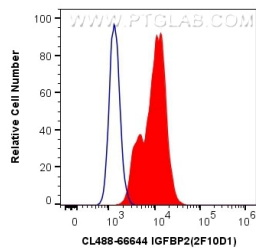
For technical support and original validation data for this product please contact:
T: 1 (888) 4PTGLAB (1-888-478-4522) (toll free in USA), or 1(312) 455-8498 (outside USA)
E: proteintech@ptglab.com
W: ptglab.com

This product is exclusively available under Proteintech Group brand and is not available to purchase from any other manufacturer.

Selected Validation Data



Immunofluorescent analysis of (-20°C Methanol) fixed MCF-7 cells using CoraLite® Plus 488 IGFBP2 antibody (CL488-66644, Clone: 2F10D1) at dilution of 1:200.



1X10⁶ MCF-7 cells were intracellularly stained with 0.4 ug CoraLite® Plus 488 Anti-Human IGFBP2 (CL488-66644, Clone:2F10D1) (red), or 0.4 ug Control Antibody. Cells were fixed with 4% PFA and permeabilized with Flow Cytometry Perm Buffer (PF00011-C).