

For Research Use Only

CoraLite® Plus 488-conjugated TLR2 Monoclonal antibody



Catalog Number: CL488-66645

Featured Product

Basic Information

Catalog Number: CL488-66645	GenBank Accession Number: BC033756	Purification Method: Protein A purification
Size: 100ul , Concentration: 1000 µg/ml by Nanodrop;	GeneID (NCBI): 7097	CloneNo.: 1C1D3
Source: Mouse	Full Name: toll-like receptor 2	Recommended Dilutions: IF 1:50-1:500
Isotype: IgG2a	Calculated MW: 784 aa, 90 kDa	Excitation/Emission maxima wavelengths: 493 nm / 522 nm
Immunogen Catalog Number: AG25626	Observed MW: 90-100 kDa	

Applications

Tested Applications: FC (Intra), IF	Positive Controls: IF : THP-1 cells,
Species Specificity: Human	

Background Information

TLR2, also known as CD282, is a member of the Toll-like receptor (TLR) family. TLR receptors are type I integral transmembrane glycoproteins which play a fundamental role in pathogen recognition and activation of innate immunity. TLR2 is expressed by immune cells including monocytes/macrophages, polymorphonuclear leukocytes (PMLs) and dendritic cells, and is also expressed by some non-immune cells including endothelial and epithelial cells (PMID: 21428911; 22566960). TLR2 forms heterodimers with TLR1 and TLR6, which is the initial step in a cascade of events leading to significant innate immune responses, development of adaptive immunity to pathogens and protection from immune sequelae related to infection with these pathogens (PMID: 22566960).

Storage

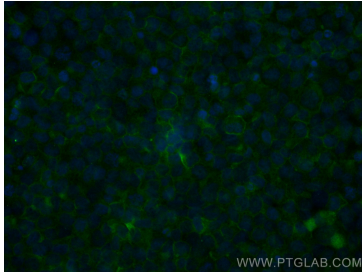
Storage:
Store at -20°C. Avoid exposure to light. Stable for one year after shipment.
Storage Buffer:
PBS with 50% Glycerol, 0.05% Proclin300, 0.5% BSA, pH 7.3.
Aliquoting is unnecessary for -20°C storage

*** 20ul sizes contain 0.1% BSA

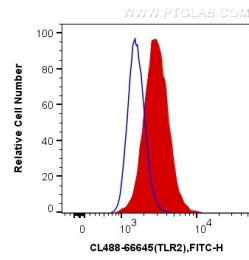
For technical support and original validation data for this product please contact:
T: 1 (888) 4PTGLAB (1-888-478-4522) (toll free in USA), or 1(312) 455-8498 (outside USA)
E: proteintech@ptglab.com
W: ptglab.com

This product is exclusively available under Proteintech Group brand and is not available to purchase from any other manufacturer.

Selected Validation Data



Immunofluorescent analysis of (4% PFA) fixed THP-1 cells using CoraLite® Plus 488 TLR2 antibody (CL488-66645, Clone: 1C1D3) at dilution of 1:100.



1X10⁶ THP-1 cells were intracellularly stained with 0.4 ug CoraLite® Plus 488 Anti-Human TLR2 (CL488-66645, Clone:1C1D3) (red), or 0.4 ug Control Antibody. Cells were fixed with 4% PFA and permeabilized with Flow Cytometry Perm Buffer (PF00011-C).