

For Research Use Only

CoraLite® Plus 488-conjugated ASF/SF2 Monoclonal antibody

Catalog Number:CL488-66671



Basic Information

Catalog Number:	CL488-66671	GenBank Accession Number:	BC010264	Purification Method:	Protein G purification
Size:	100ul , Concentration: 1000 ug/ml by Nanodrop;	GeneID (NCBI):	6426	CloneNo.:	1A6C5
Source:	Mouse	UNIPROT ID:	Q07955	Recommended Dilutions:	IF/ICC 1:50-1:500
Isotype:	IgG1	Full Name:	splicing factor, arginine/serine-rich 1	Excitation/Emission maxima wavelengths:	493 nm / 522 nm
Immunogen Catalog Number:	AG3626	Calculated MW:	248 aa, 28 kDa		
		Observed MW:	32 kDa, 28 kDa, 22 kDa		

Applications

Tested Applications:	Positive Controls:
IF/ICC	IF/ICC : HepG2 cells,
Species Specificity:	
Human, mouse, rat	

Background Information

SFRS1, also named as ASF, SF2, SF2P33, SFRS1 and ASF-1, belongs to the splicing factor SR family. It plays a role in preventing exon skipping, ensuring the accuracy of splicing and regulating alternative splicing. SFRS1 interacts with other spliceosomal components, via the RS domains, to form a bridge between the 5'- and 3'-splice site binding components, U1 snRNP and U2AF. Isoform ASF-2 and isoform ASF-3 act as splicing repressors. This antibody can recognize all the 3 isoforms(28kd,33kd and 22kd) of SFRS1.

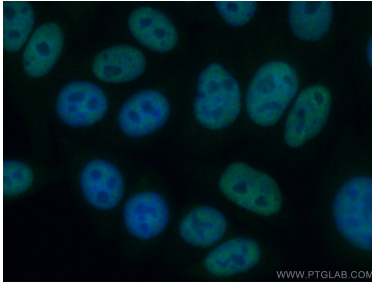
Storage

Storage:
Store at -20°C. Avoid exposure to light. Stable for one year after shipment.
Storage Buffer:
PBS with 50% Glycerol, 0.05% Proclin300, 0.5% BSA, pH 7.3.
Aliquoting is unnecessary for -20°C storage

For technical support and original validation data for this product please contact:
T: 1 (888) 4PTGLAB (1-888-478-4522) (toll free in USA), or 1(312) 455-8498 (outside USA)
E: proteintech@ptglab.com
W: ptglab.com

This product is exclusively available under Proteintech Group brand and is not available to purchase from any other manufacturer.

Selected Validation Data



Immunofluorescent analysis of (4% PFA) fixed HepG2 cells using CoraLite® Plus 488-conjugated ASF/SF2 antibody (CL488-66671, Clone: 1A6C5) at dilution of 1:100.