

For Research Use Only

CoraLite® Plus 488-conjugated MLKL Monoclonal antibody

Catalog Number: CL488-66675

Featured Product

2 Publications



Basic Information

Catalog Number:

CL488-66675

Size:

100ul, Concentration: 1000 ug/ml by Nanodrop;

Source:

Mouse

Isotype:

IgG1

Immunogen Catalog Number:

AG15188

GenBank Accession Number:

BC028141

GeneID (NCBI):

197259

UNIPROT ID:

Q8NB16

Full Name:

mixed lineage kinase domain-like

Calculated MW:

471 aa, 54 kDa

Observed MW:

54 kDa

Purification Method:

Protein G purification

CloneNo.:

3D4C6

Recommended Dilutions:

IF-P 1:50-1:500

IF/ICC 1:50-1:500

Excitation/Emission maxima wavelengths:

493 nm / 522 nm

Applications

Tested Applications:

IF/ICC, IF-P

Cited Applications:

IF

Species Specificity:

human, mouse

Cited Species:

mouse

Positive Controls:

IF-P: human liver cancer tissue,

IF/ICC: HepG2 cells,

Background Information

Mixed lineage kinase domain like pseudokinase (MLKL), belongs to the protein kinase superfamily, has two MW of 54 and 30 kDa. MLKL plays a critical role in tumor necrosis factor (TNF)-induced necroptosis, a programmed cell death process, via interaction with receptor-interacting protein 3 (RIP3), which is a key signaling molecule in necroptosis pathway. High levels of this protein and RIP3 are associated with inflammatory bowel disease in children.

Notable Publications

Author	Pubmed ID	Journal	Application
Han-Xi Sha	39309425	Int J Biol Sci	IF
Wen-Jing Zhong	36879273	J Transl Med	IF,FC

Storage

Storage:

Store at -20°C. Avoid exposure to light. Stable for one year after shipment.

Storage Buffer:

PBS with 50% Glycerol, 0.05% Proclin300, 0.5% BSA, pH 7.3.

Aliquoting is unnecessary for -20°C storage

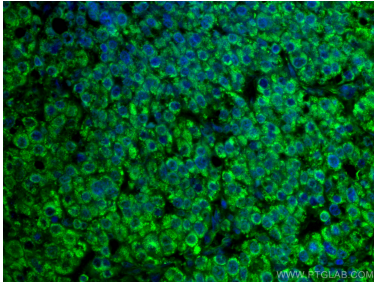
For technical support and original validation data for this product please contact:

T: 1 (888) 4PTGLAB (1-888-478-4522) (toll free in USA), or 1(312) 455-8498 (outside USA)

E: proteintech@ptglab.com
W: ptglab.com

This product is exclusively available under Proteintech Group brand and is not available to purchase from any other manufacturer.

Selected Validation Data



Immunofluorescent analysis of (4% PFA) fixed human liver cancer tissue using CoraLite® Plus 488-conjugated MLKL antibody (CL488-66675, Clone: 3D4C6) at dilution of 1:100.



Immunofluorescent analysis of (-20°C Ethanol) fixed HepG2 cells using CoraLite® Plus 488 MLKL antibody (CL488-66675, Clone: 3D4C6) at dilution of 1:200.