

For Research Use Only

CoraLite® Plus 488-conjugated PSMA/GCPII Monoclonal antibody



Catalog Number: CL488-66678

Basic Information

Catalog Number: CL488-66678	GenBank Accession Number: BC025672	Purification Method: Protein G purification
Size: 100ul , Concentration: 1000 µg/ml by Nanodrop;	GeneID (NCBI): 2346	CloneNo.: 3G4E12
Source: Mouse	Full Name: folate hydrolase (prostate-specific membrane antigen) 1	Recommended Dilutions: IF 1:50-1:500
Isotype: IgG1	Calculated MW: 719 aa, 81 kDa	Excitation/Emission maxima wavelengths: 493 nm / 522 nm
Immunogen Catalog Number: AG16594	Observed MW: 100-120 kDa	

Applications

Tested Applications: IF	Positive Controls: IF : PC-3 cells, human prostate cancer tissue
Species Specificity: Human, Rat	

Background Information

PSMA(Prostate-specific membrane antigen) is also named as FOLH1, FOLH, NAALAD1, PSM and belongs to the peptidase M28 family. PSMA is a 100-120 kDa integral transmembrane glycoprotein, considered to be a highly specific marker of the prostate gland, and has successfully been used as a marker of circulating prostatic epithelial cells(PMID:10074909; 15680901). It is involved in conversion of the major neurotransmitter (NAA/G) to NAA and free glutamate. It has 8 isoforms produced by alternative splicing.

Storage

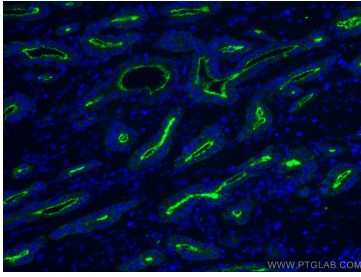
Storage:
Store at -20°C. Avoid exposure to light. Stable for one year after shipment.
Storage Buffer:
PBS with 50% Glycerol, 0.05% Proclin300, 0.5% BSA, pH 7.3.
Aliquoting is unnecessary for -20°C storage

*** 20ul sizes contain 0.1% BSA

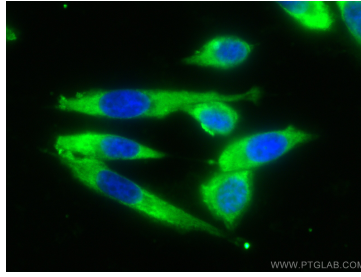
For technical support and original validation data for this product please contact:
T: 1 (888) 4PTGLAB (1-888-478-4522) (toll free in USA), or 1(312) 455-8498 (outside USA)
E: proteintech@ptglab.com
W: ptglab.com

This product is exclusively available under Proteintech Group brand and is not available to purchase from any other manufacturer.

Selected Validation Data



Immunofluorescent analysis of (4% PFA) fixed human prostate cancer tissue using CoraLite® Plus 488 PSMA/GCPII antibody (CL488-66678, Clone: 3G4E12) at dilution of 1:200.



Immunofluorescent analysis of (-20°C Ethanol) fixed PC-3 cells using CoraLite® Plus 488 PSMA/GCPII antibody (CL488-66678, Clone: 3G4E12) at dilution of 1:100.