

For Research Use Only

CoraLite® Plus 488-conjugated BTC Monoclonal antibody

Catalog Number:CL488-66683



Basic Information

Catalog Number: CL488-66683	GenBank Accession Number: BC011618	Purification Method: Protein G purification
Size: 100ul , Concentration: 1000 ug/ml by Nanodrop;	GeneID (NCBI): 685	CloneNo.: 2H5E8
Source: Mouse	UNIPROT ID: P35070	Recommended Dilutions: WB 1:500-1:2000
Isotype: IgG1	Full Name: betacellulin	Excitation/Emission maxima wavelengths: 493 nm / 522 nm
Immunogen Catalog Number: AG26724	Calculated MW: 20 kDa	
	Observed MW: 20 kDa	

Applications

Tested Applications: WB	Positive Controls: WB : A549 cells, MDA-MB-231 cells
Species Specificity: Human	

Background Information

Betacellulin (BTC), a member of the epidermal growth factor (EGF) family, binds and activates ErbB1 and ErbB4 homodimers. BTC is synthesized primarily as a transmembrane precursor, which is then processed to mature molecule by proteolytic events. This protein is a ligand for the EGF receptor. BTC was expressed in tumors and involved in tumor growth progression.

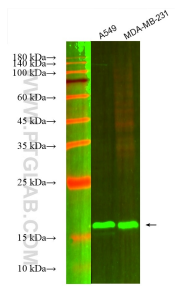
Storage

Storage:
Store at -20°C. Avoid exposure to light. Stable for one year after shipment.
Storage Buffer:
PBS with 50% Glycerol, 0.05% Proclin300, 0.5% BSA, pH 7.3.
Aliquoting is unnecessary for -20°C storage

For technical support and original validation data for this product please contact:
T: 1 (888) 4PTGLAB (1-888-478-4522) (toll free in USA), or 1(312) 455-8498 (outside USA)
E: proteintech@ptglab.com
W: ptglab.com

This product is exclusively available under Proteintech Group brand and is not available to purchase from any other manufacturer.

Selected Validation Data



Various lysates were subjected to SDS PAGE followed by western blot with CL488-66683 (BTC antibody) at dilution of 1:1000 incubated at room temperature for 1.5 hours.