

For Research Use Only

CoraLite® Plus 488-conjugated RAB3GAP1 Monoclonal antibody

Catalog Number: CL488-66688



Basic Information

Catalog Number:

CL488-66688

Size:

100ul , Concentration: 1000 ug/ml by
Nanodrop;

Source:

Mouse

Isotype:

IgG1

Immunogen Catalog Number:

AG17710

GenBank Accession Number:

BC146809

GeneID (NCBI):

22930

UNIPROT ID:

Q15042

Full Name:

RAB3 GTPase activating protein
subunit 1 (catalytic)

Calculated MW:

981 aa, 111 kDa

Observed MW:

130 kDa

Purification Method:

Protein G purification

CloneNo.:

4A3A1

Recommended Dilutions:

IF/ICC 1:50-1:500

Excitation/Emission maxima
wavelengths:

493 nm / 522 nm

Applications

Tested Applications:

IF/ICC, FC (Intra)

Species Specificity:

human, mouse, rat

Positive Controls:

IF/ICC : HEK-293 cells,

Storage

Storage:

Store at -20°C. Avoid exposure to light. Stable for one year after shipment.

Storage Buffer:

PBS with 50% Glycerol, 0.05% Proclin300, 0.5% BSA, pH 7.3.

Aliquoting is unnecessary for -20°C storage

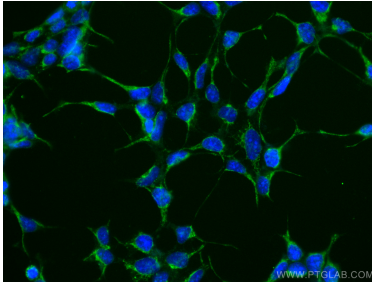
For technical support and original validation data for this product please contact:

T: 1 (888) 4PTGLAB (1-888-478-4522) (toll free
in USA), or 1(312) 455-8498 (outside USA)

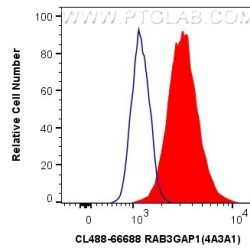
E: proteintech@ptglab.com
W: ptglab.com

This product is exclusively available under Proteintech
Group brand and is not available to purchase from any
other manufacturer.

Selected Validation Data



Immunofluorescent analysis of (-20°C Ethanol) fixed HEK-293 cells using Coralite® Plus 488 RAB3GAP1 antibody (CL488-66688, Clone: 4A3A1) at dilution of 1:100.



1X10⁶ HEK-293 cells were intracellularly stained with 0.4 ug Coralite® Plus 488 Anti-Human RAB3GAP1 (CL488-66688, Clone: 4A3A1) (red), or 0.4 ug Control Antibody. Cells were fixed with 4% PFA and permeabilized with Flow Cytometry Perm Buffer (PF00011-C).