

For Research Use Only

CoraLite® Plus 488-conjugated RBX1 Monoclonal antibody

Catalog Number:CL488-66716



Basic Information

Catalog Number:

CL488-66716

Size:

100ul , Concentration: 1000 ug/ml by Nanodrop;

Source:

Mouse

Isotype:

IgG1

Immunogen Catalog Number:

AG7005

GenBank Accession Number:

BC001466

GeneID (NCBI):

9978

UNIPROT ID:

P62877

Full Name:

ring-box 1

Calculated MW:

12 kDa

Observed MW:

12-15 kDa

Purification Method:

Protein G purification

CloneNo.:

1F4D9

Recommended Dilutions:

IF/ICC 1:250-1:1000

Excitation/Emission maxima wavelengths:

493 nm / 522 nm

Applications

Tested Applications:

IF/ICC

Species Specificity:

human, mouse, rat

Positive Controls:

IF/ICC : HeLa cells,

Background Information

RBX1(RING-box protein 1) is also named as RNF75, ROC1 and is a requisite component of the multi- subunit SCF family E3s36-40. It mediates the ubiquitination and subsequent proteasomal degradation of target proteins, including proteins involved in cell cycle progression, signal transduction, transcription and transcription-coupled nucleotide excision repair.

Storage

Storage:

Store at -20°C. Avoid exposure to light. Stable for one year after shipment.

Storage Buffer:

PBS with 50% Glycerol, 0.05% Proclin300, 0.5% BSA, pH 7.3.

Aliquoting is unnecessary for -20°C storage

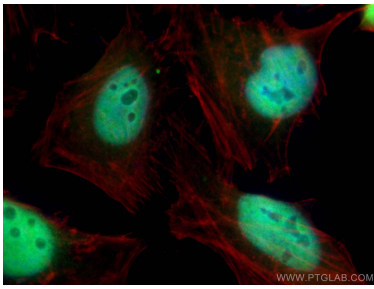
For technical support and original validation data for this product please contact:

T: 1 (888) 4PTGLAB (1-888-478-4522) (toll free in USA), or 1(312) 455-8498 (outside USA)

E: proteintech@ptglab.com
W: ptglab.com

This product is exclusively available under Proteintech Group brand and is not available to purchase from any other manufacturer.

Selected Validation Data



Immunofluorescent analysis of (4% PFA) fixed HeLa cells using CoraLite® Plus 488 RBX1 antibody (CL488-66716, Clone: 1F4D9) at dilution of 1:500, CL594-phalloidin (red).